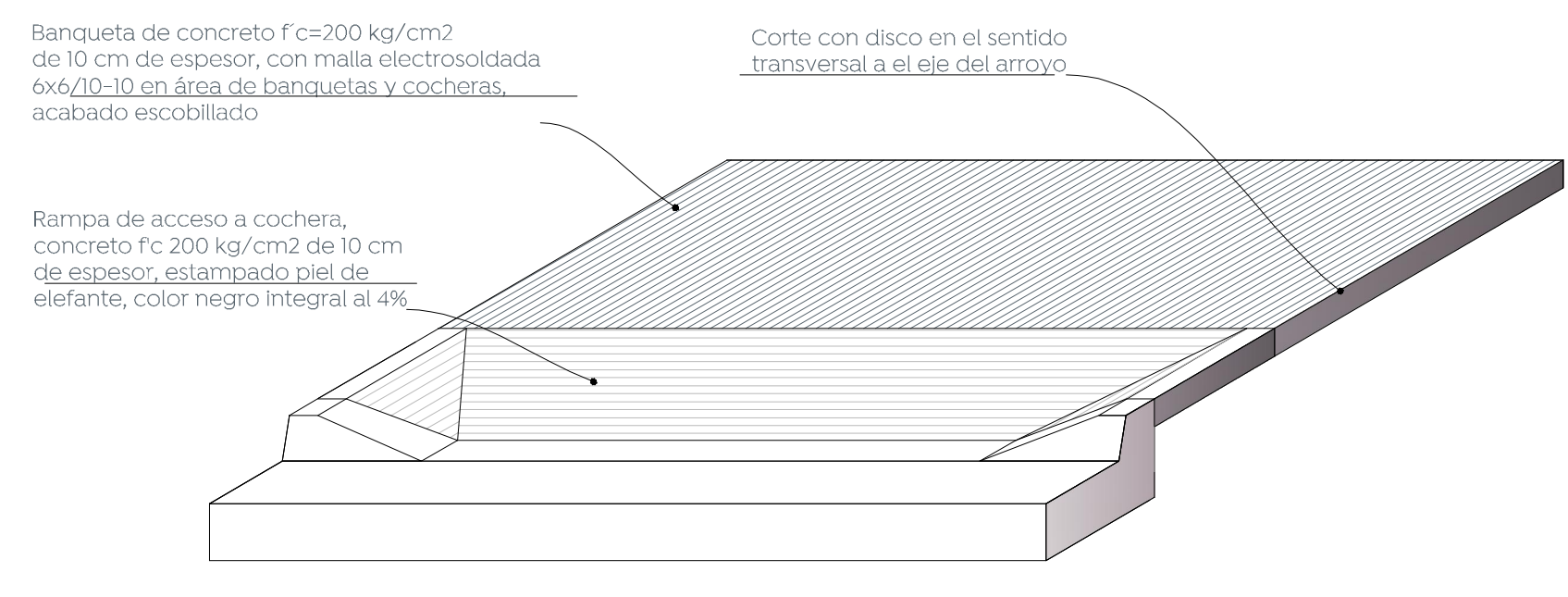
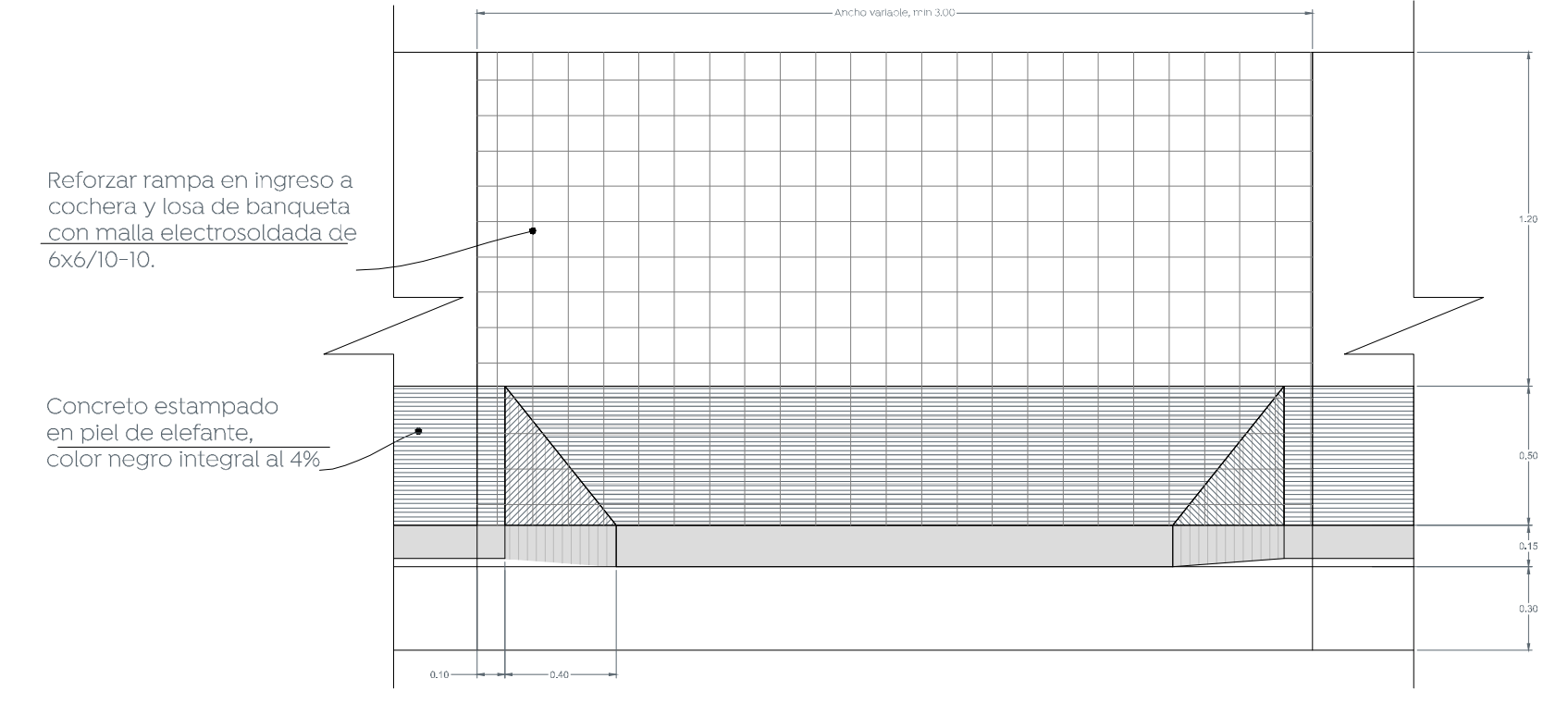
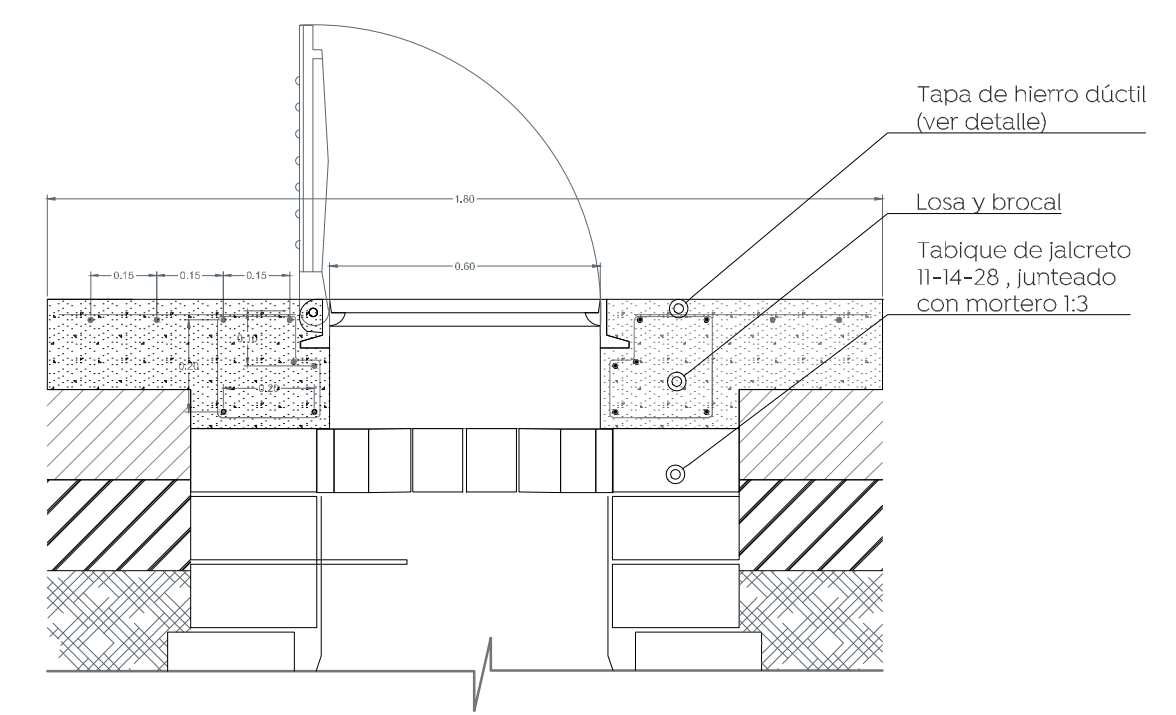
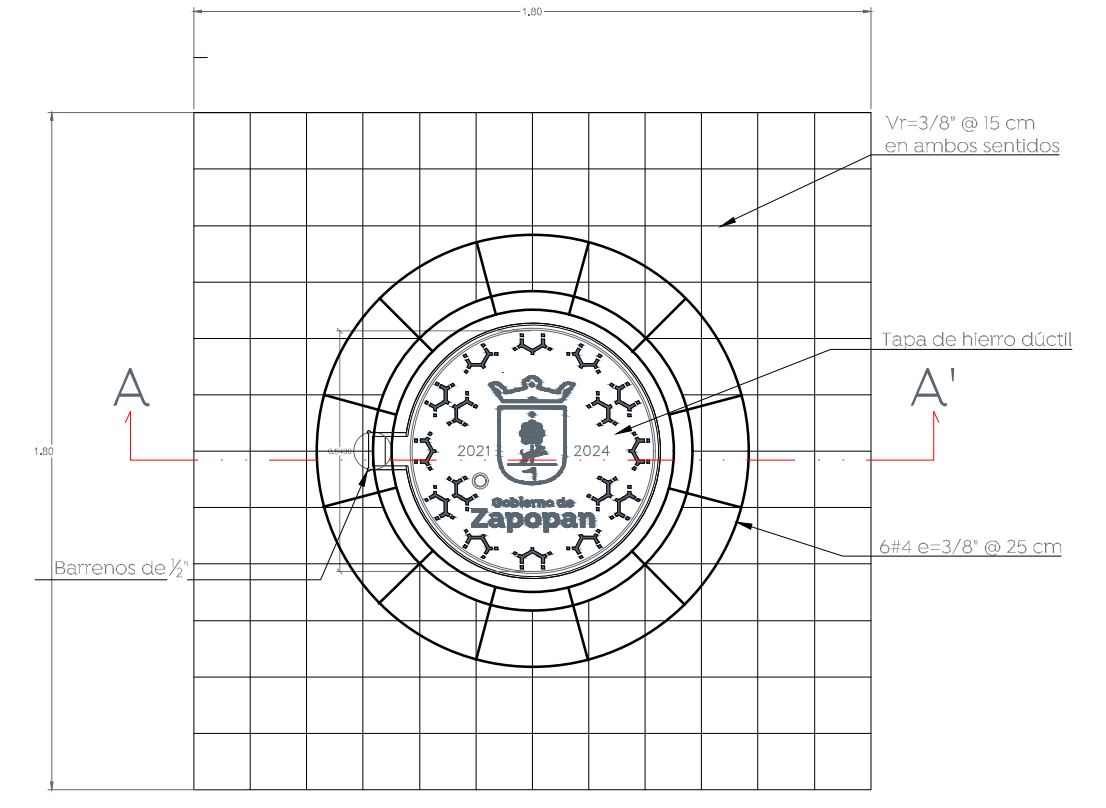


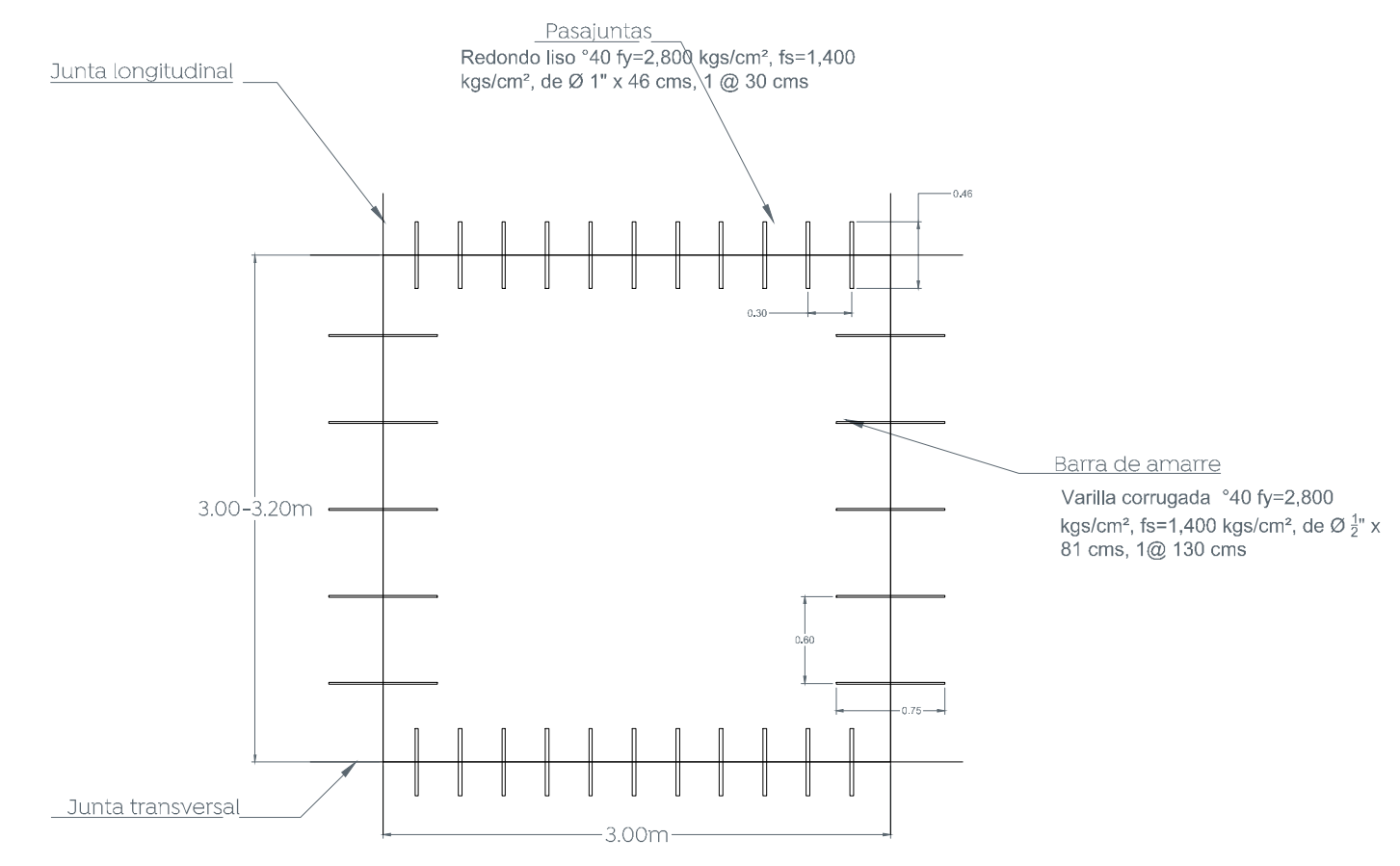
1 Detalle de guarnición
 Escala 1:10



4 Detalle de rampas de cocheras
 Escala 1:25

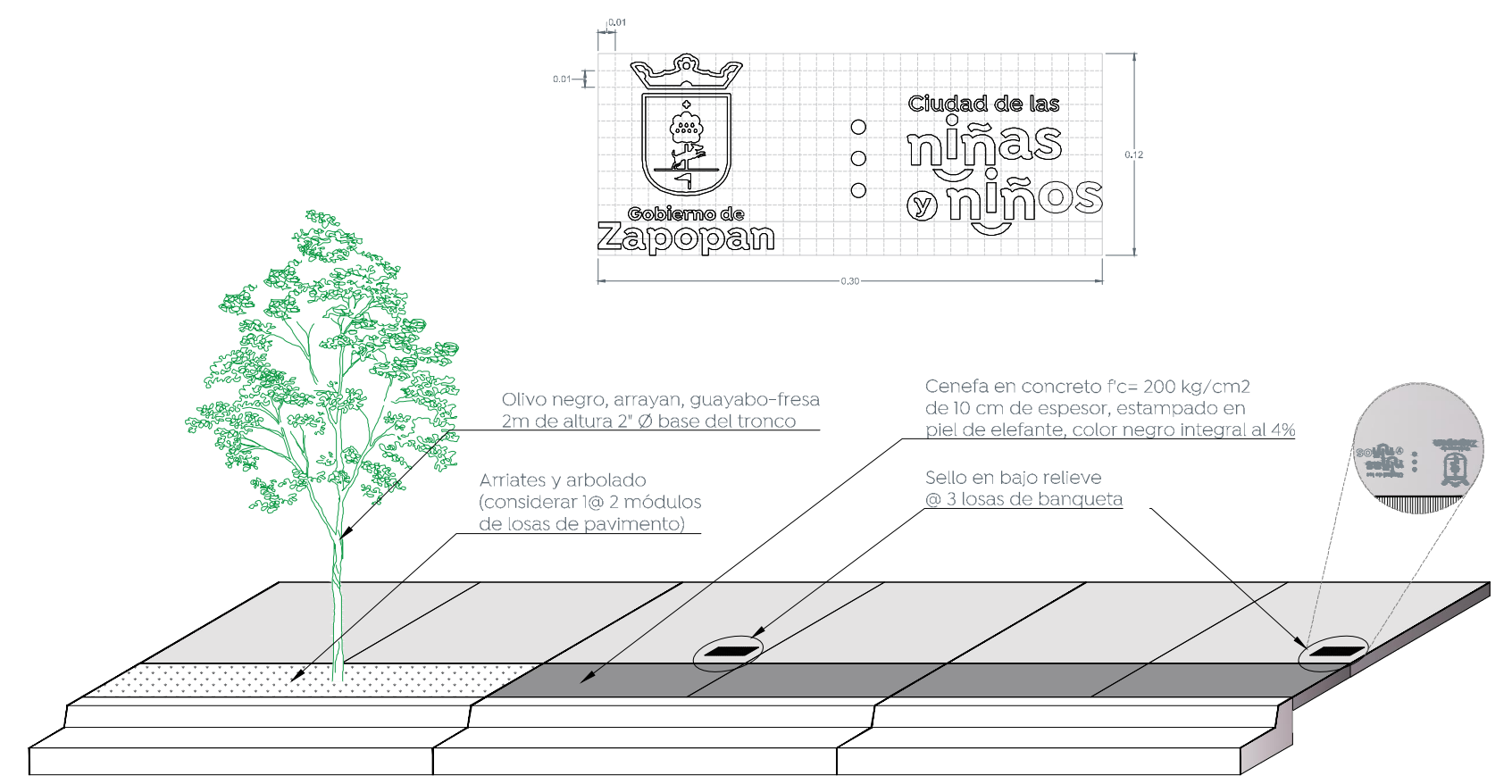


7 Detalle de brocal y tapa en pozos de visita
 Escala 1:20

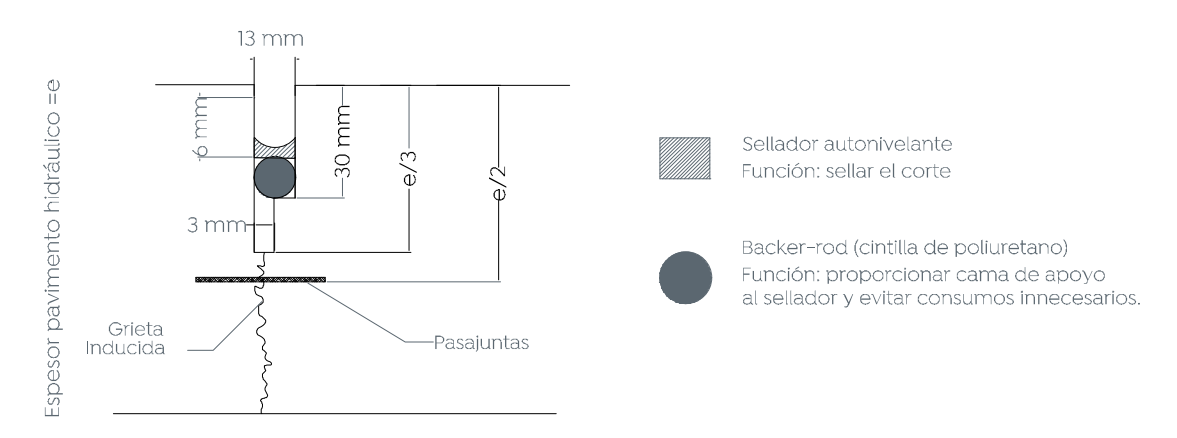


*La relación largo/ancho de las losas debe estar entre 0.71 y 1.40

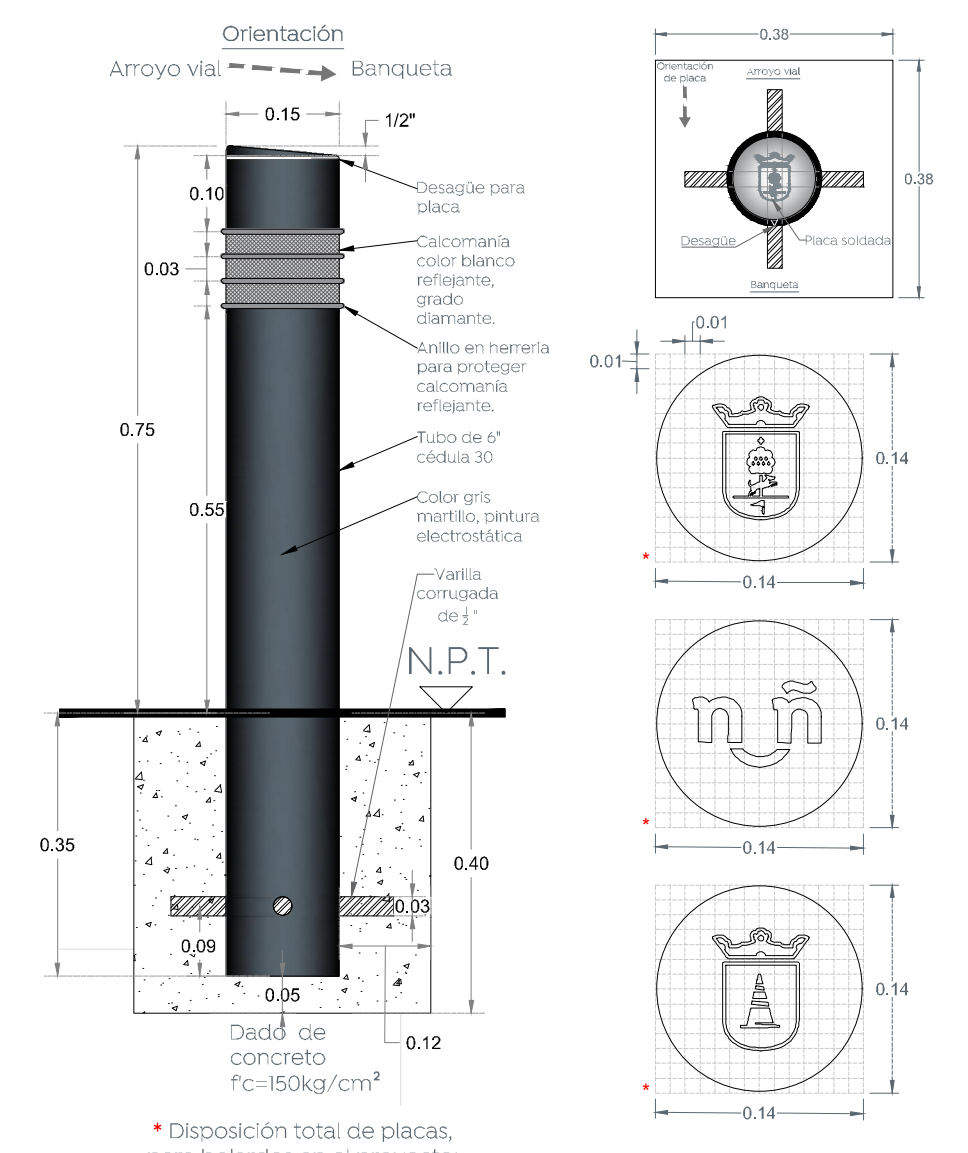
2 Modulación de losas, pasajuntas y barras de amarre
 Escala 1:50



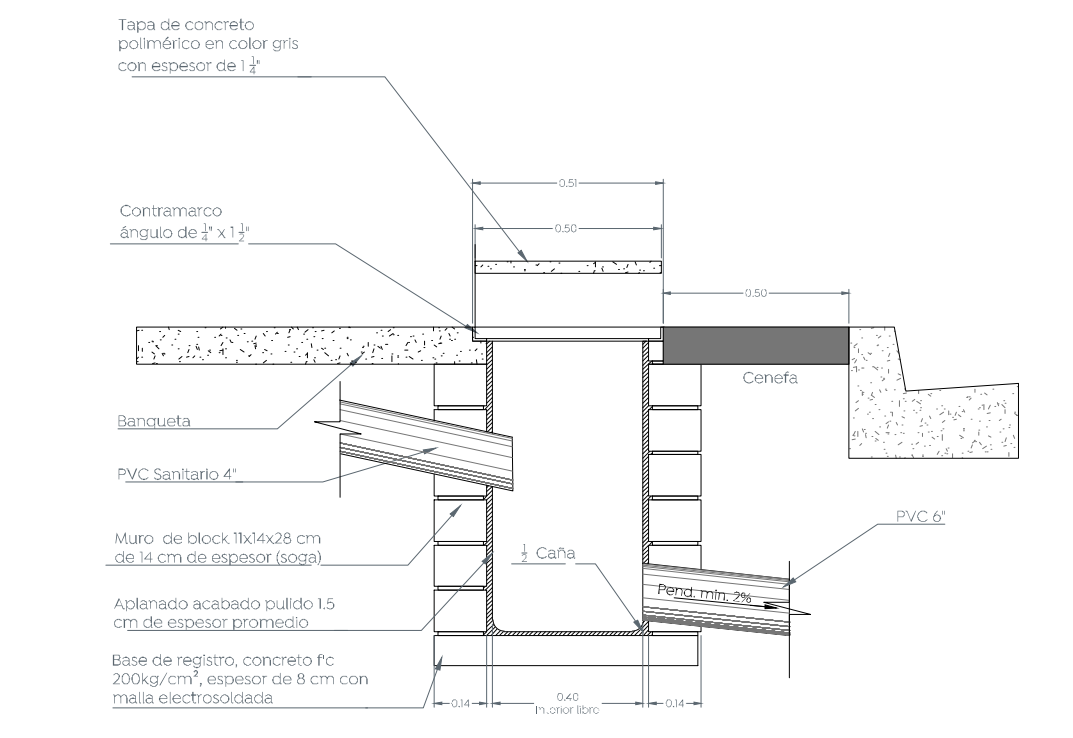
5 Detalle de configuración de banquetas
 Escala 1:50



3 Detalle de junta constructiva
 Escala 1:2



6 Detalle de bolardo y placa
 Escala 1:10



8 Detalle de descarga domiciliaria
 Escala 1:20

