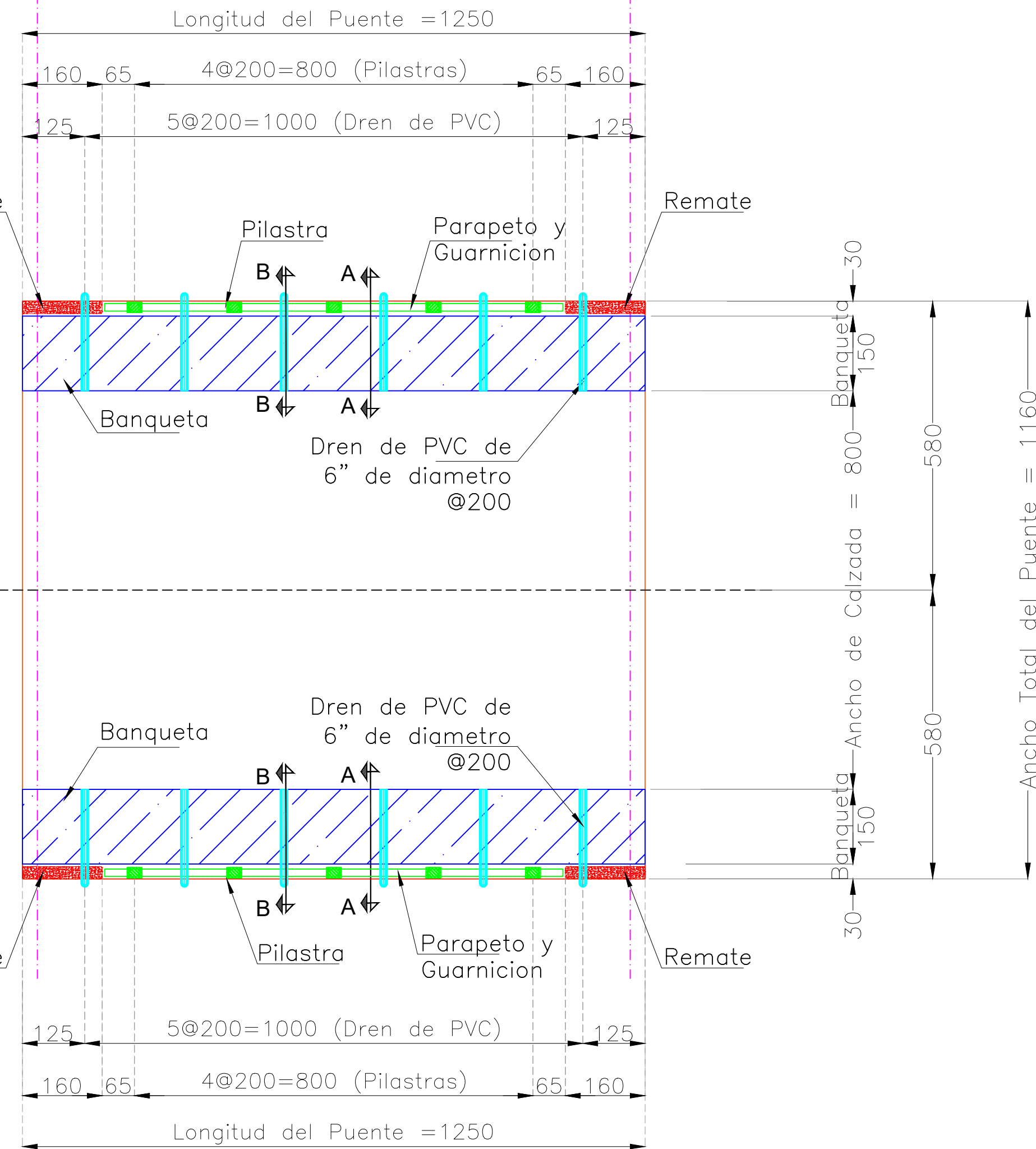


A CALLE GIGANTE

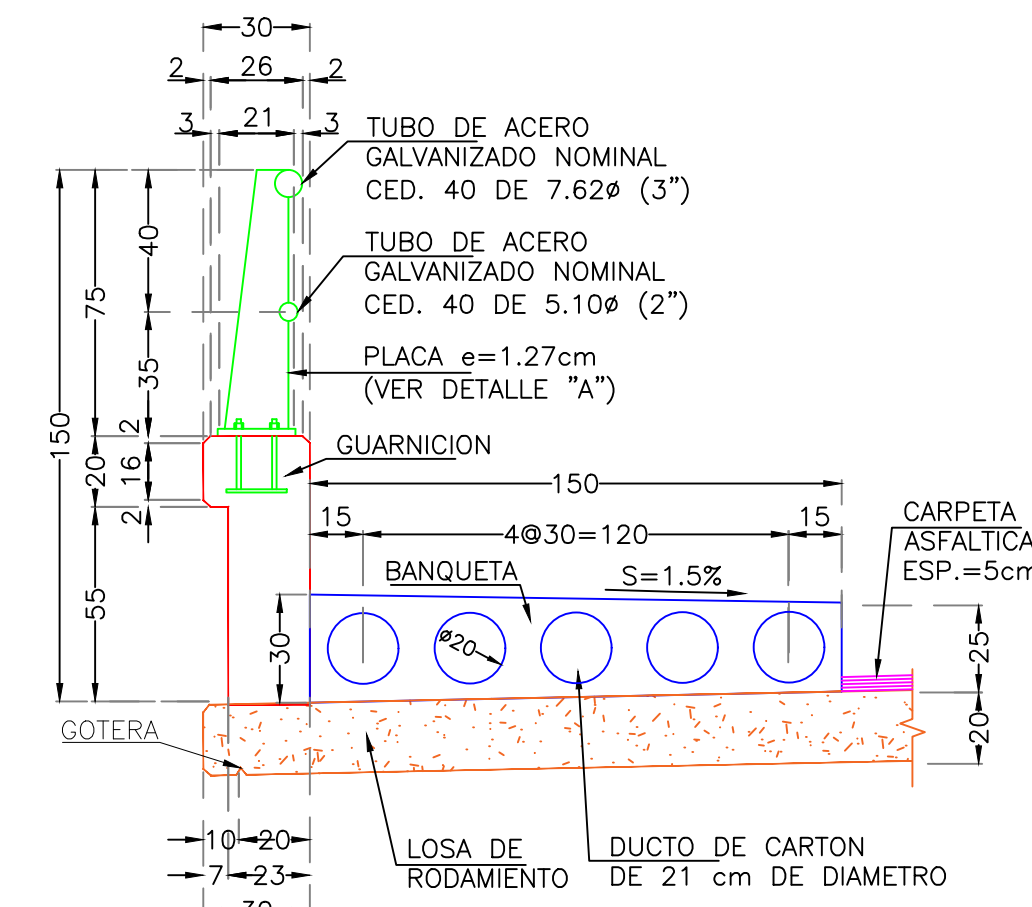
A CALLE OLIVO

1 Caballete 01 Apoyo móvil Est. 0+276.15 NR: 1571.08

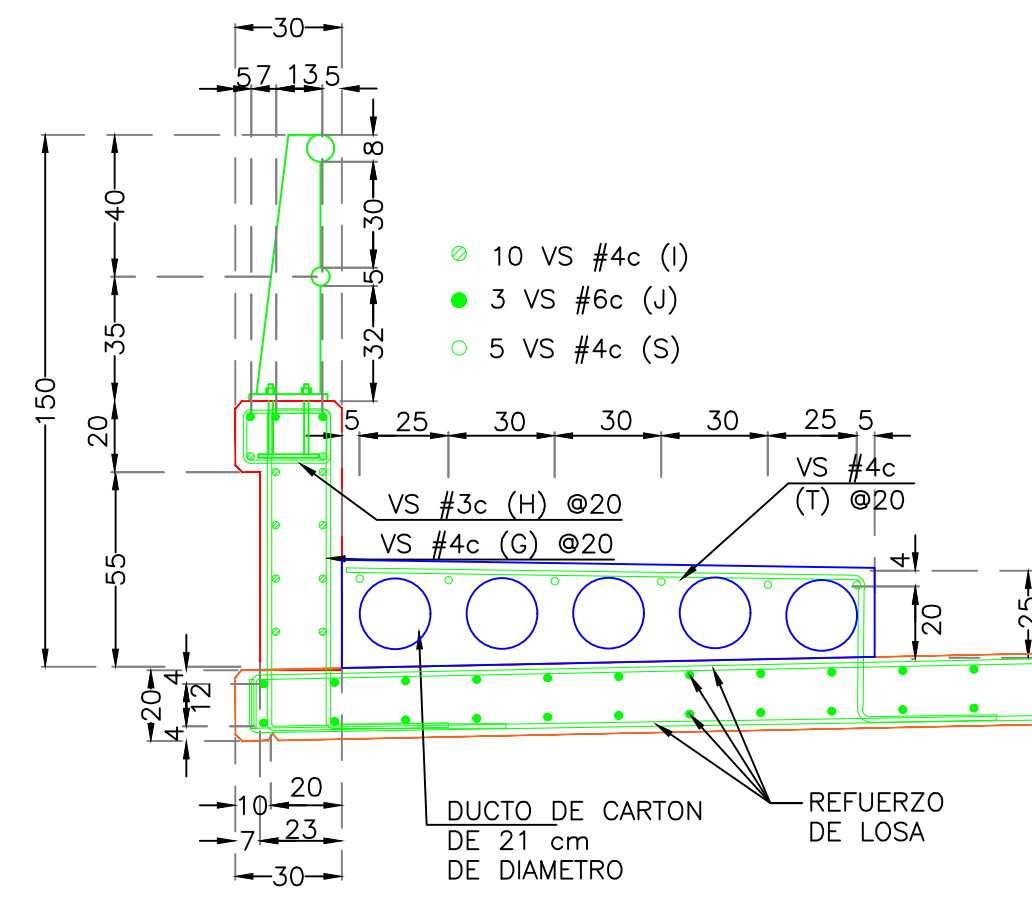
2 Caballete 02 Apoyo fijo Est. 0+288.15 NR: 1571.08



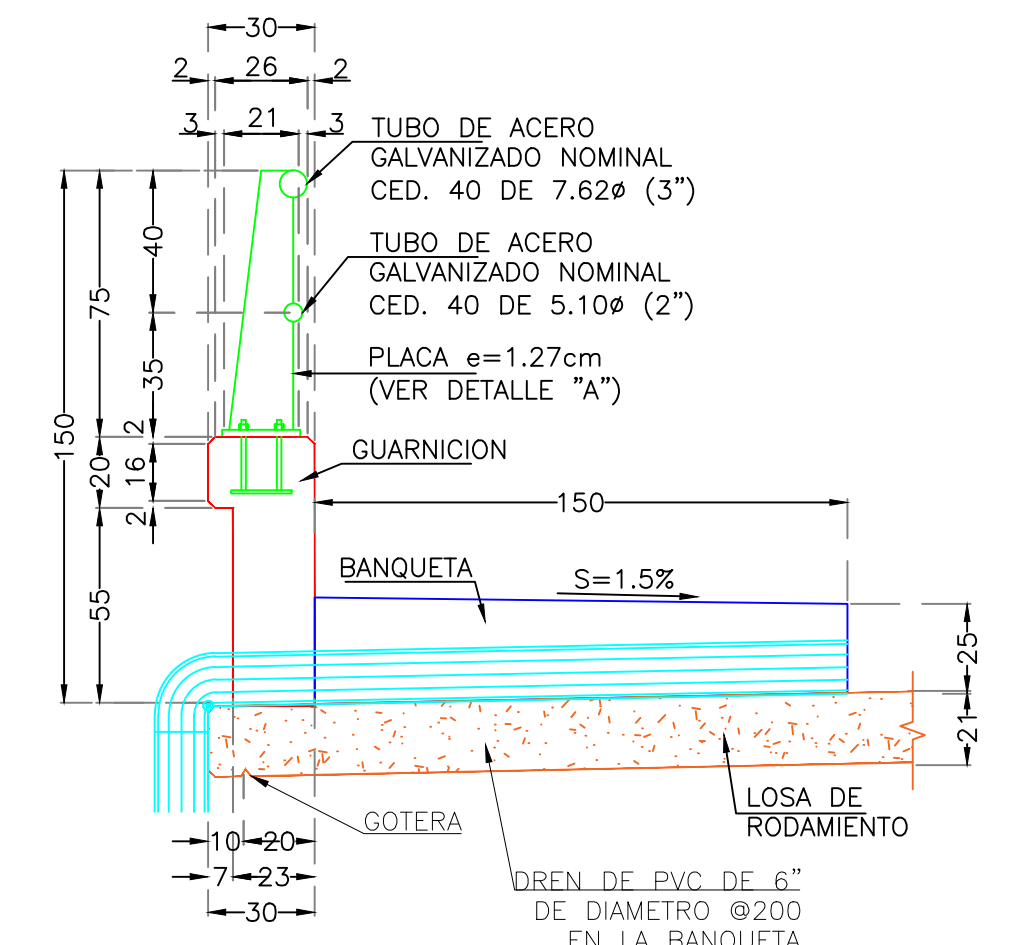
PLANTA DE PUENTE GEOMETRIA esc. 1:125



CORTE A-A GEOMETRIA esc. 1:20



CORTE A-A REFUERZO esc. 1:20



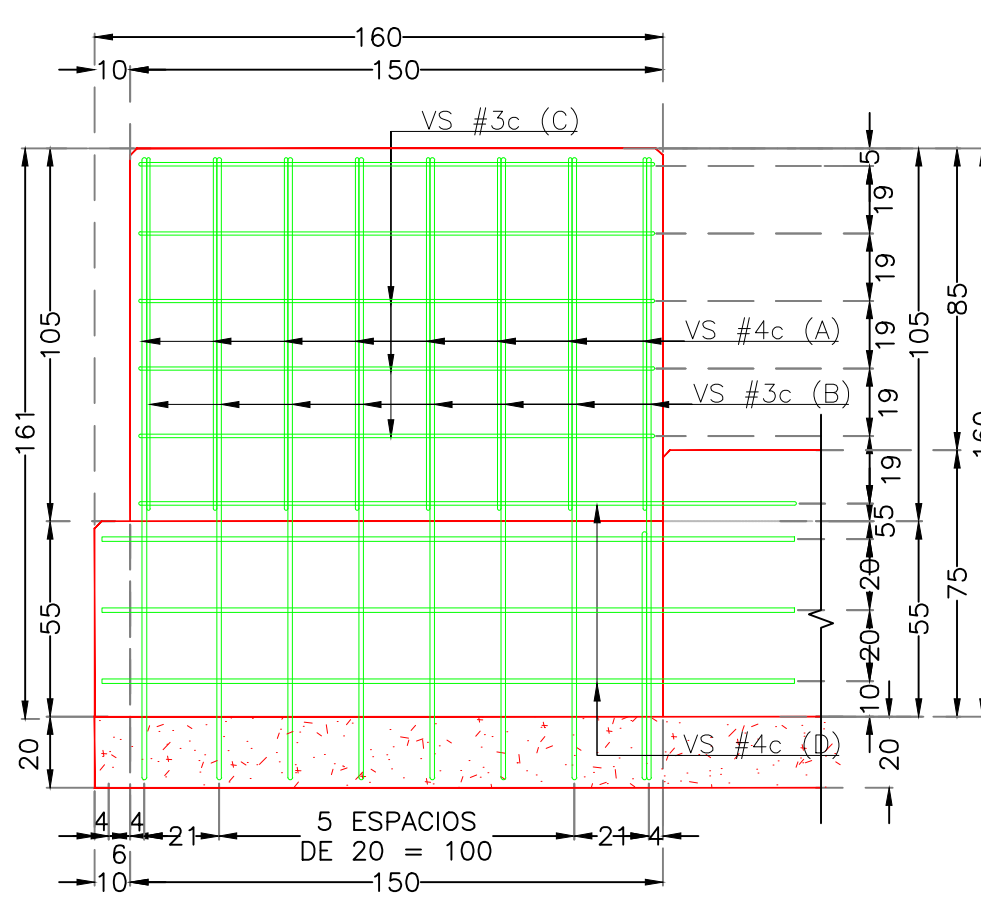
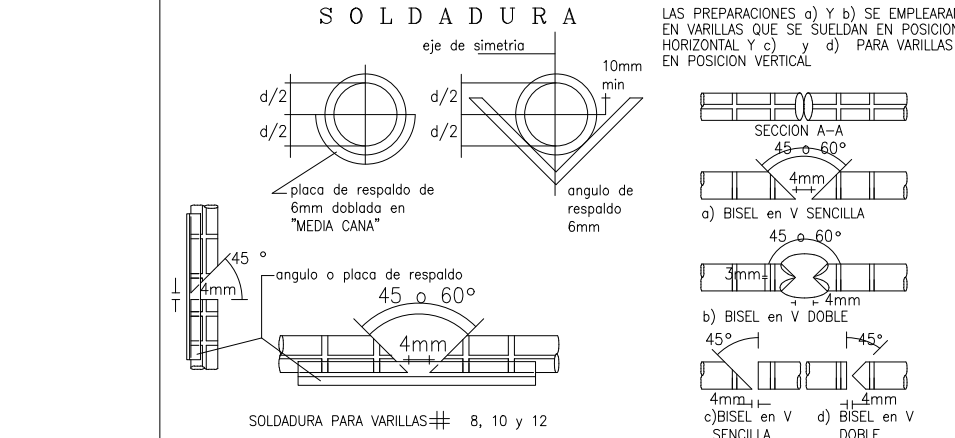
CORTE B-B GEOMETRIA esc. 1:20

Table with 2 columns: 'UN REMATE DE PARAPETO' and 'GUARNICION EN PUENTE'. Rows list materials like concrete and reinforcement with quantities.

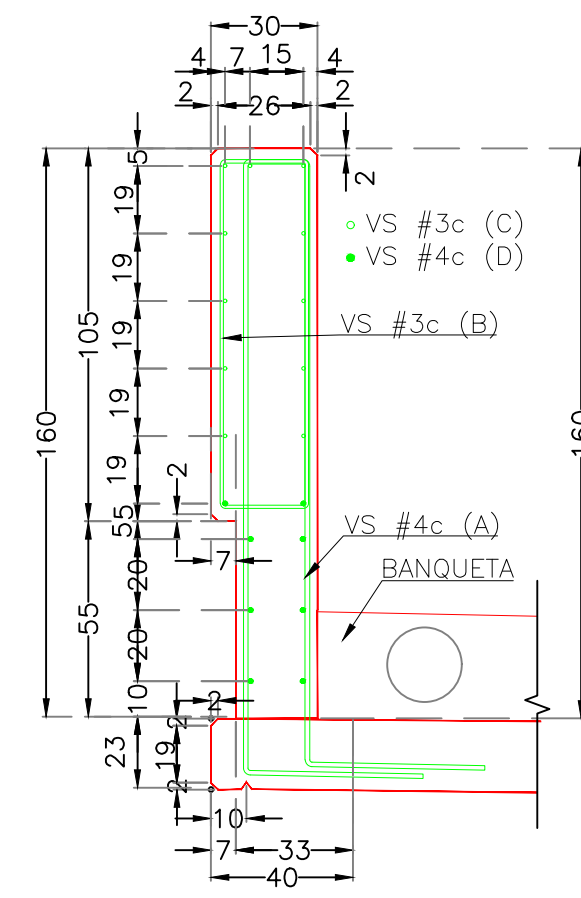
Table with 2 columns: 'MATERIALES POR METRO DE PARAPETO EN PUENTE' and 'MATERIALES POR JUNTA DE DILATACION'. Rows list materials like concrete and reinforcement with quantities.

Table with 2 columns: 'MATERIALES POR METRO DE BANQUETA EN PUENTE' and 'REMATOS DE PARAPETO'. Rows list materials like concrete and reinforcement with quantities.

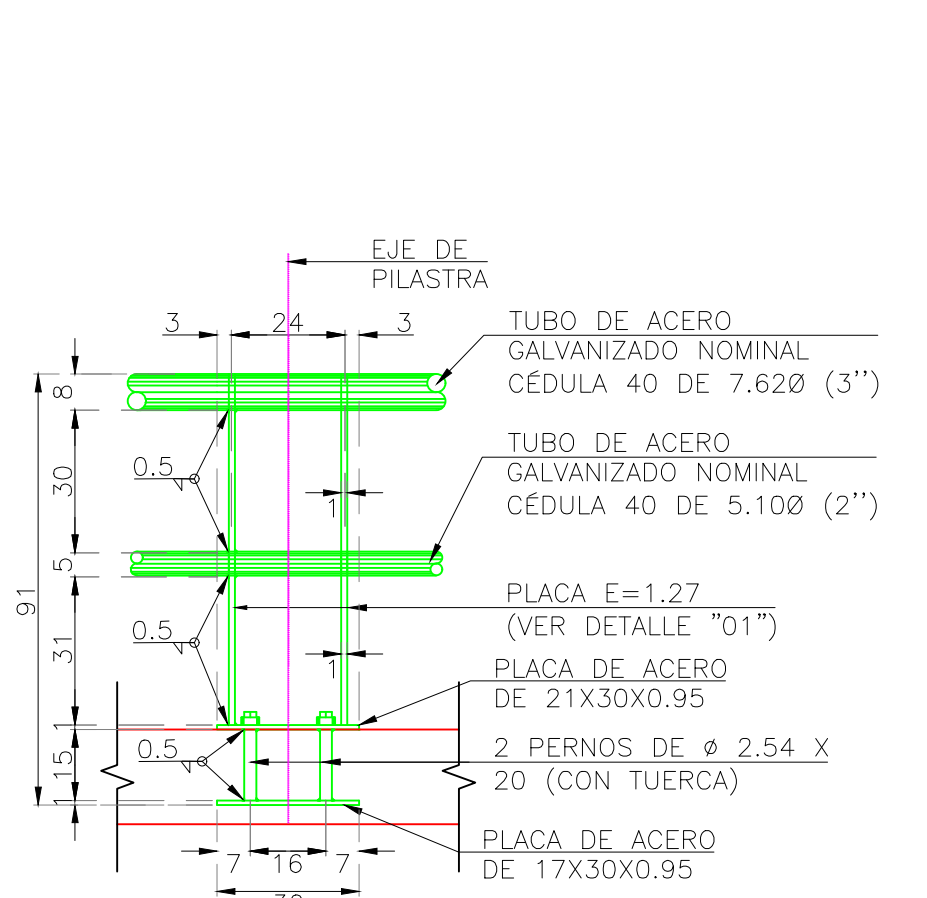
Table titled 'ESPECIFICACIONES' with columns for material type, diameter, length, and weight.



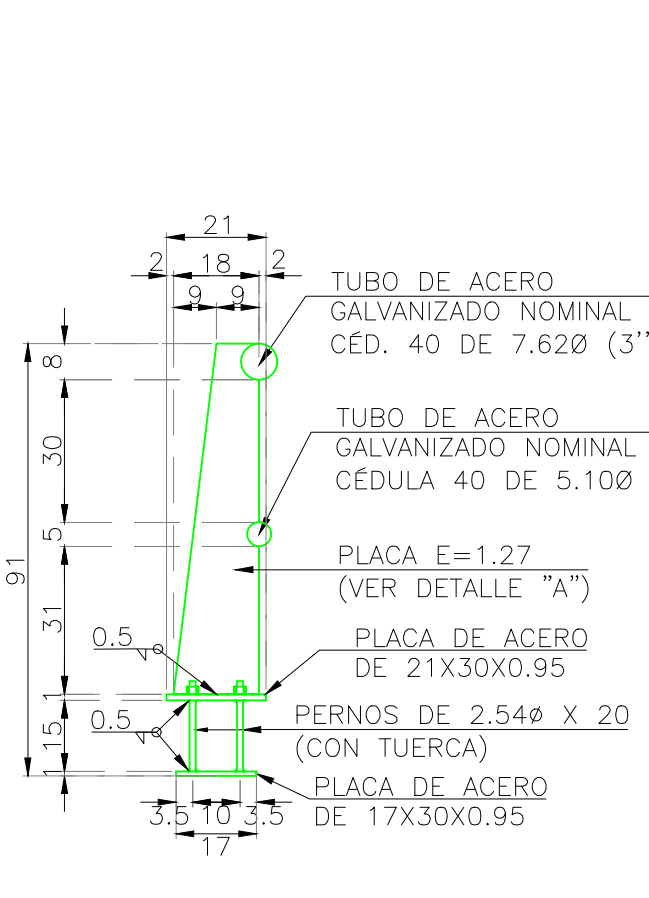
ELEVACION REFUERZO DE REMATE esc. 1:20



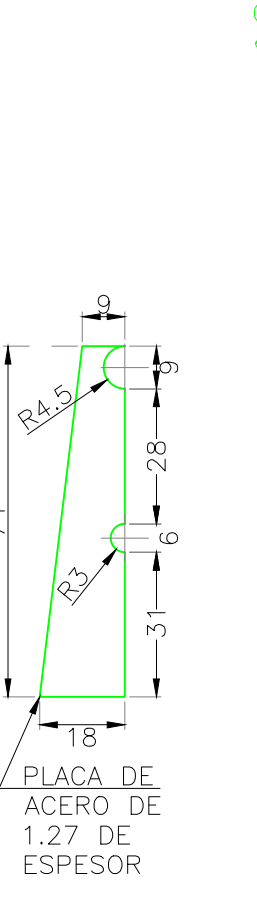
CORTE REFUERZO DE REMATE esc. 1:20



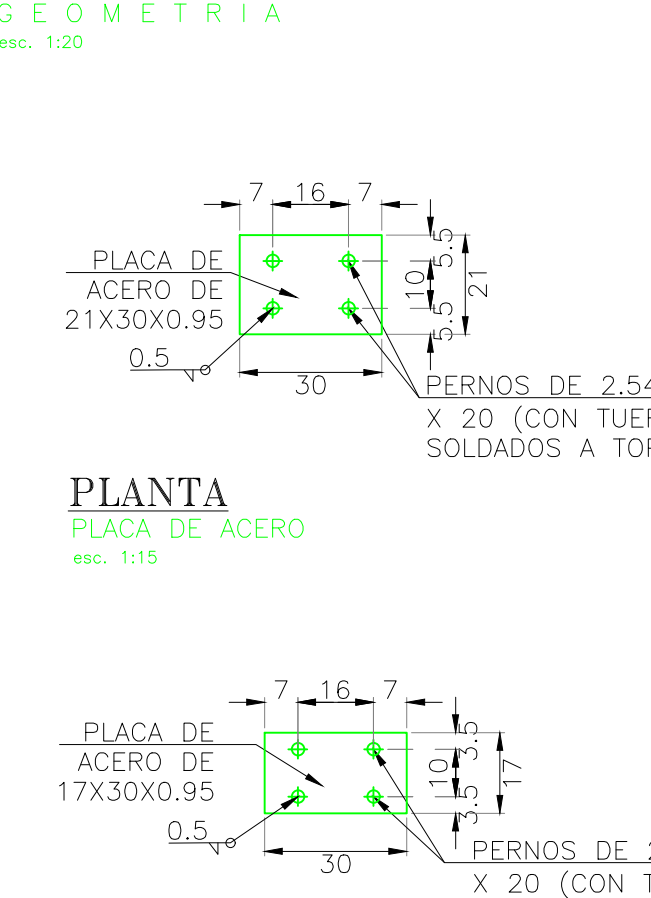
ELEVACION PILASTRA esc. 1:15



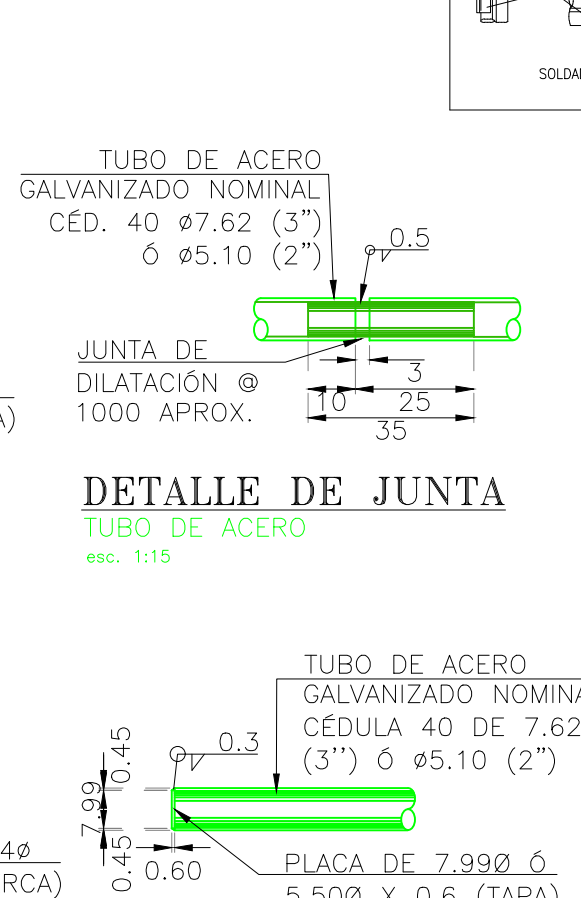
CORTE PILASTRA esc. 1:15



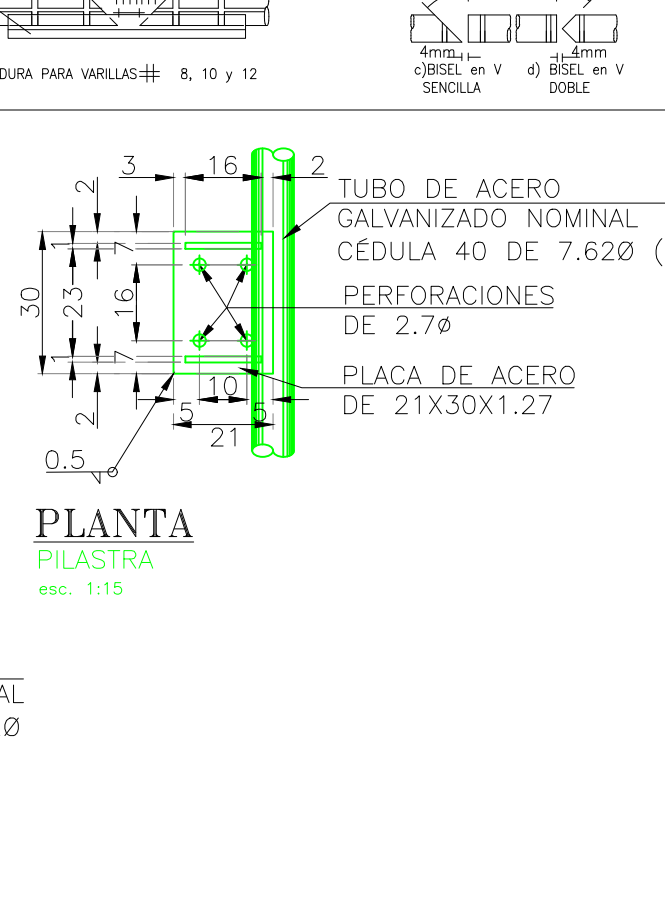
DETALLE 01 PILASTRA esc. 1:15



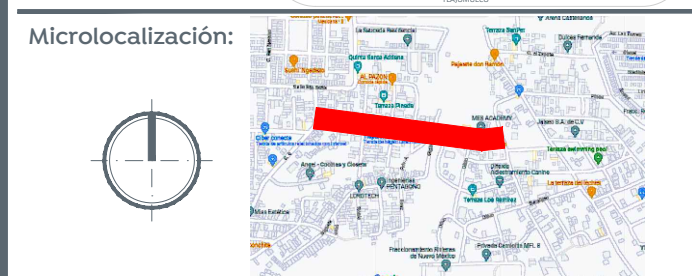
PLANTA PLANTA DE ACERO esc. 1:15



DETALLE DE JUNTA TUBO DE ACERO esc. 1:15



PLANTA PLANTA DE ACERO esc. 1:15

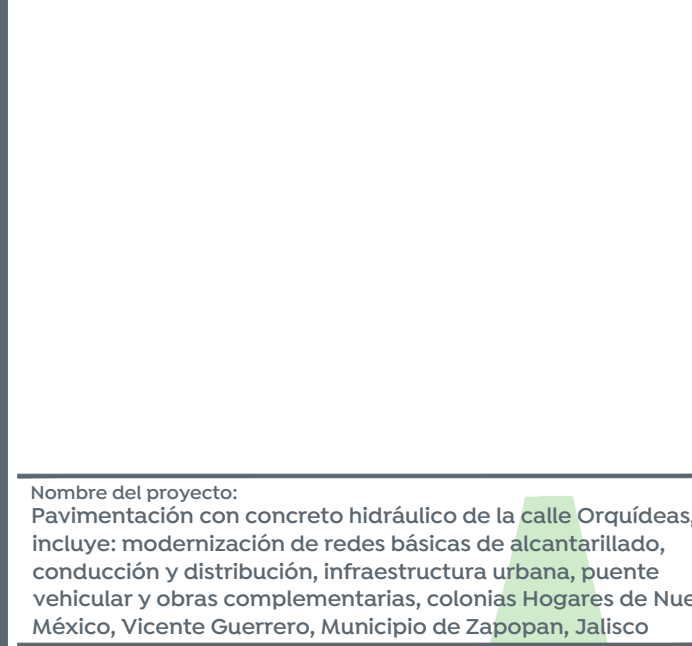


Notas detailing construction requirements, material specifications, and safety protocols.

Construction procedure section detailing the steps from reinforcement placement to final concrete pouring.

Important recommendations section providing additional technical advice for the construction team.

Project information section including the project name, location, and contact details for the engineering firm.



Project details including the location (Calle Orquídeas de ProL. Mariposa a ProL. Iero de Mayo, Zapopan, Jalisco) and contact information.