

DETALLE FLAUTAS

ANCHO 0.60 M

ANCHO 0.40 M

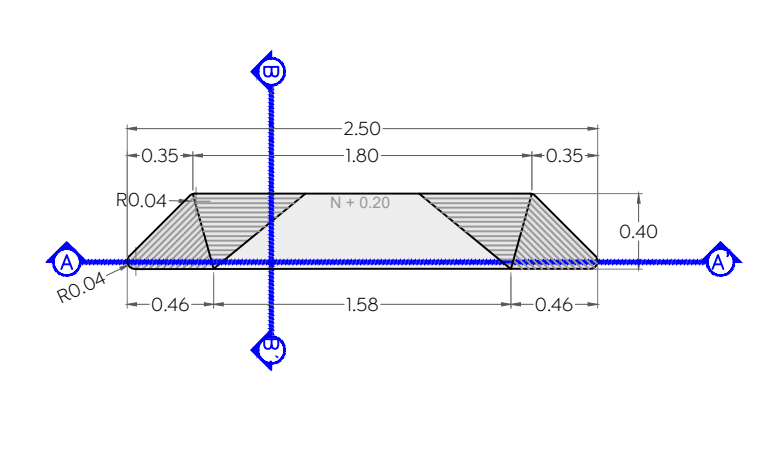
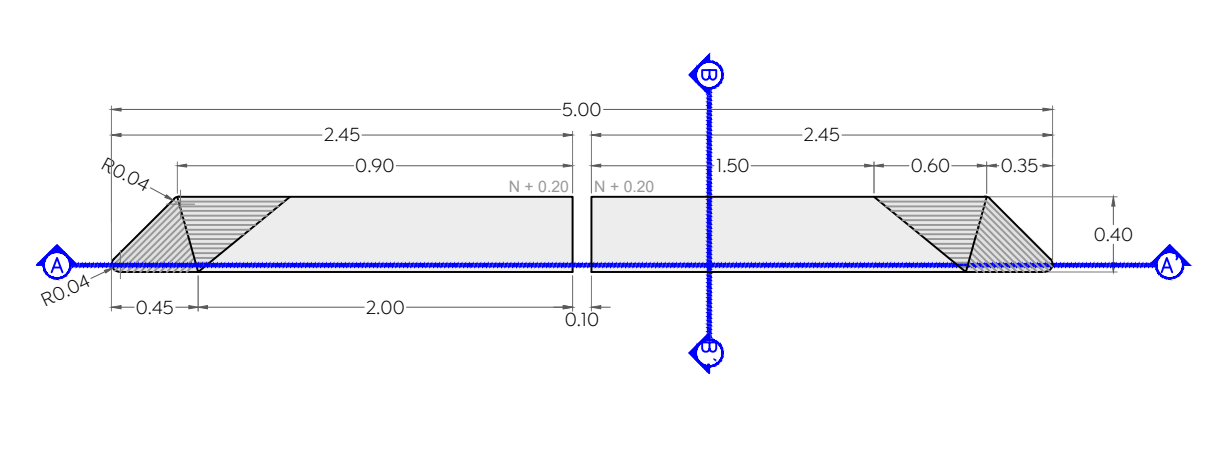
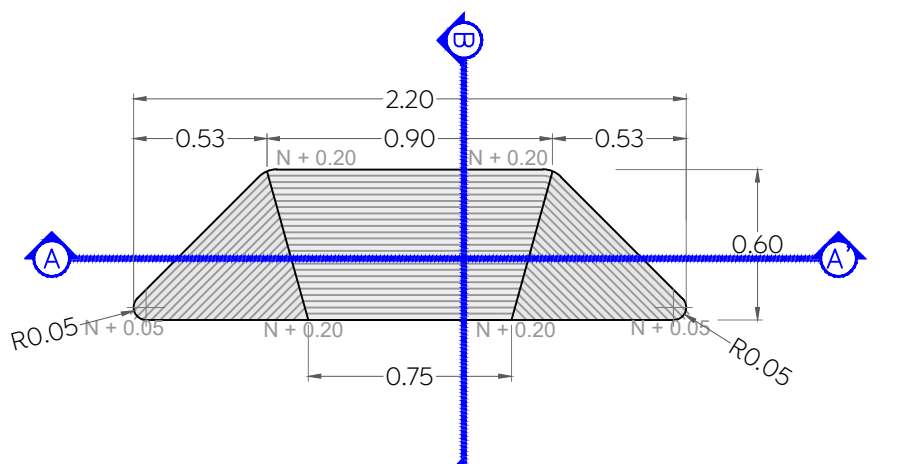
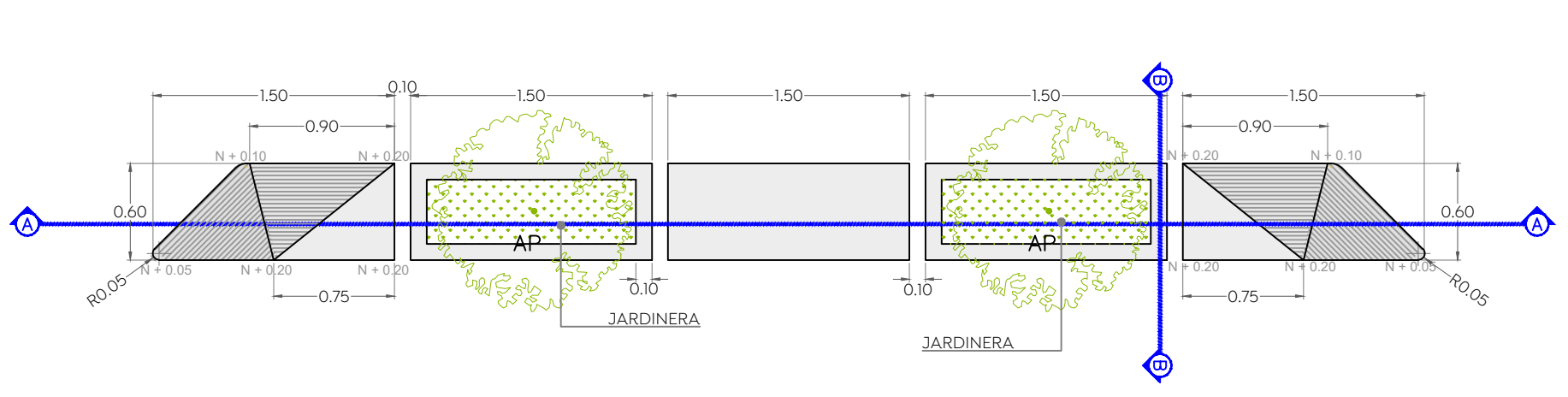
LARGO 7.90 M

LARGO 2.20 M

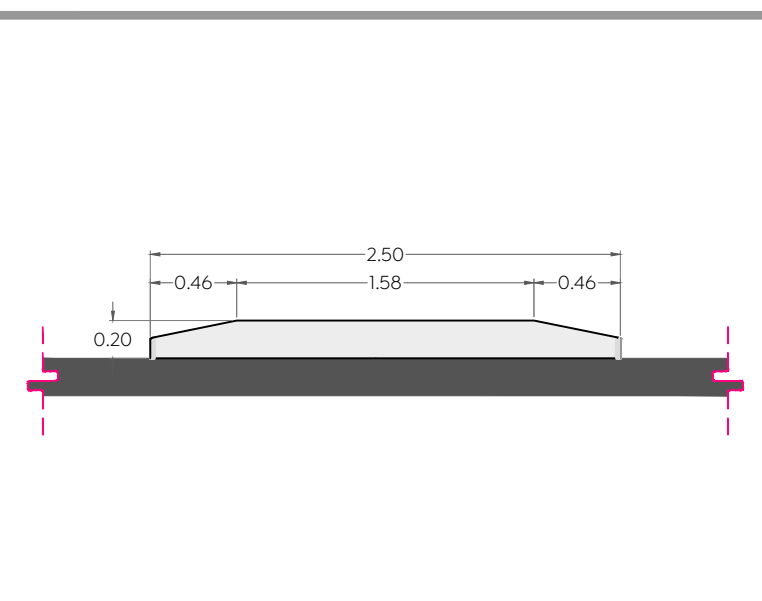
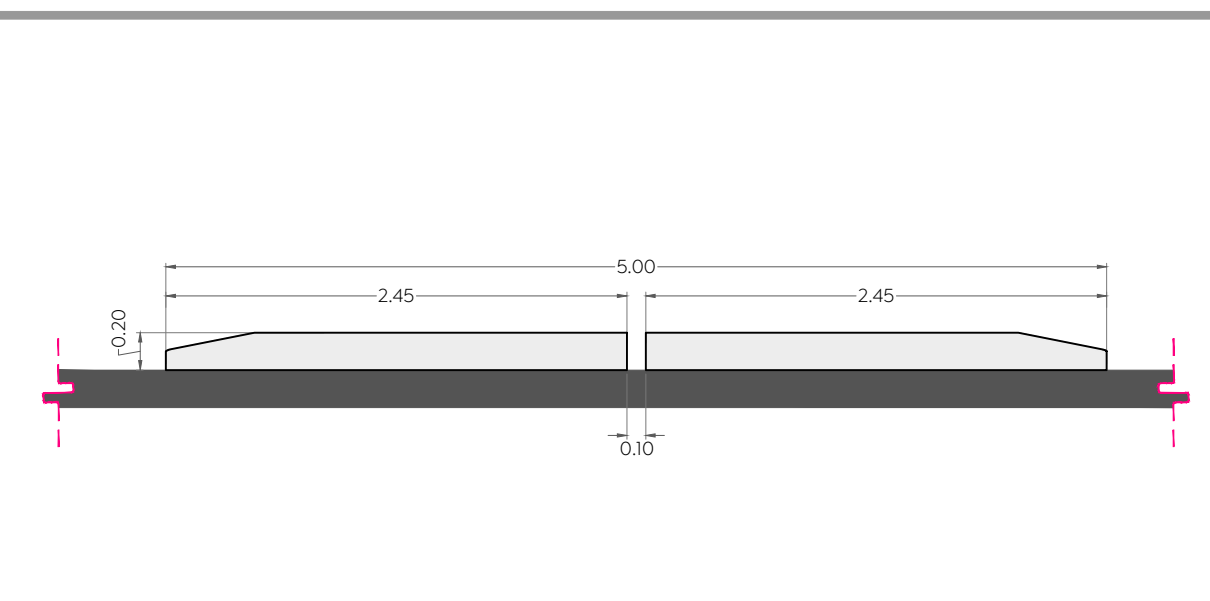
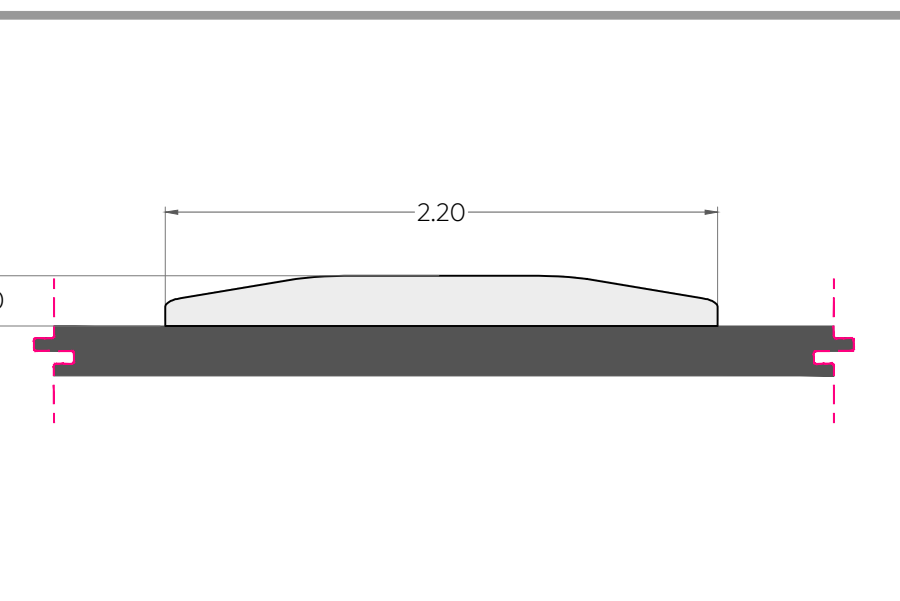
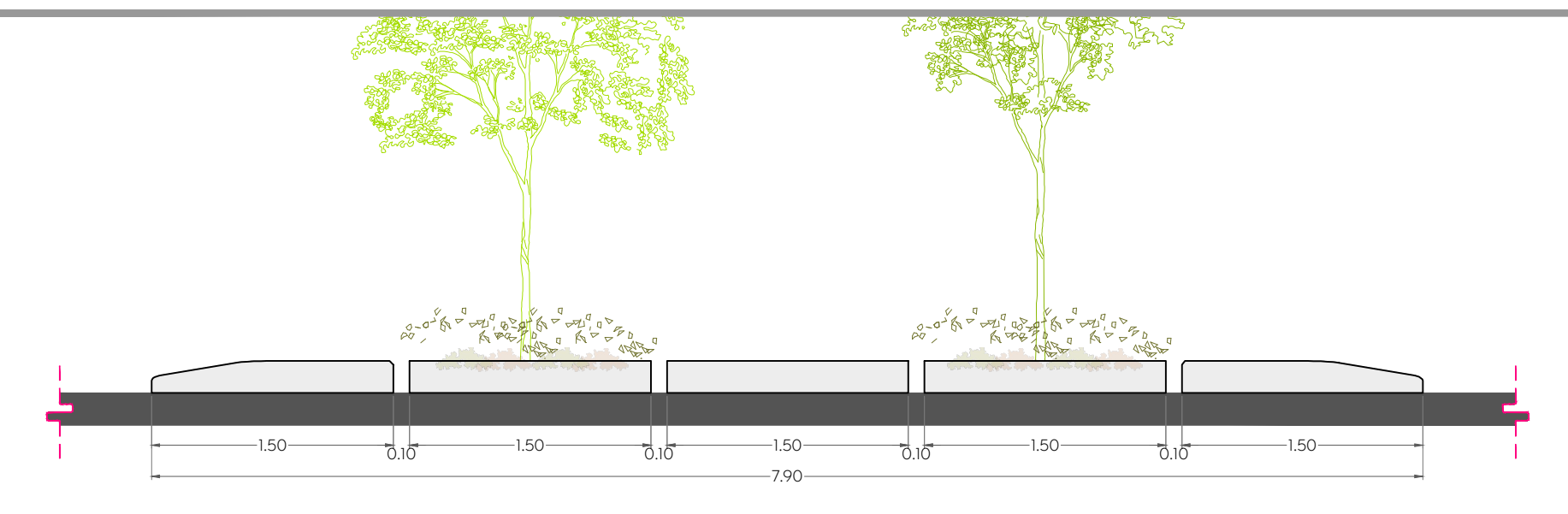
LARGO 5.00 M

LARGO 2.50 M

PLANTA

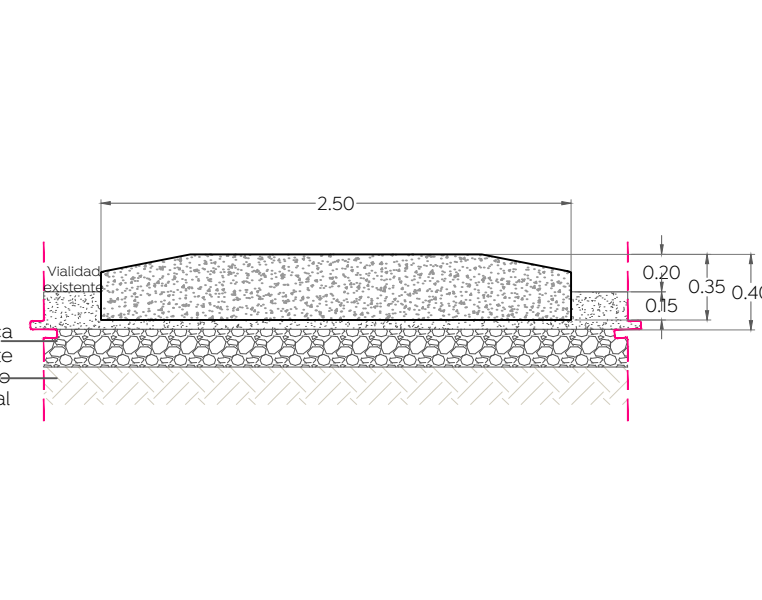
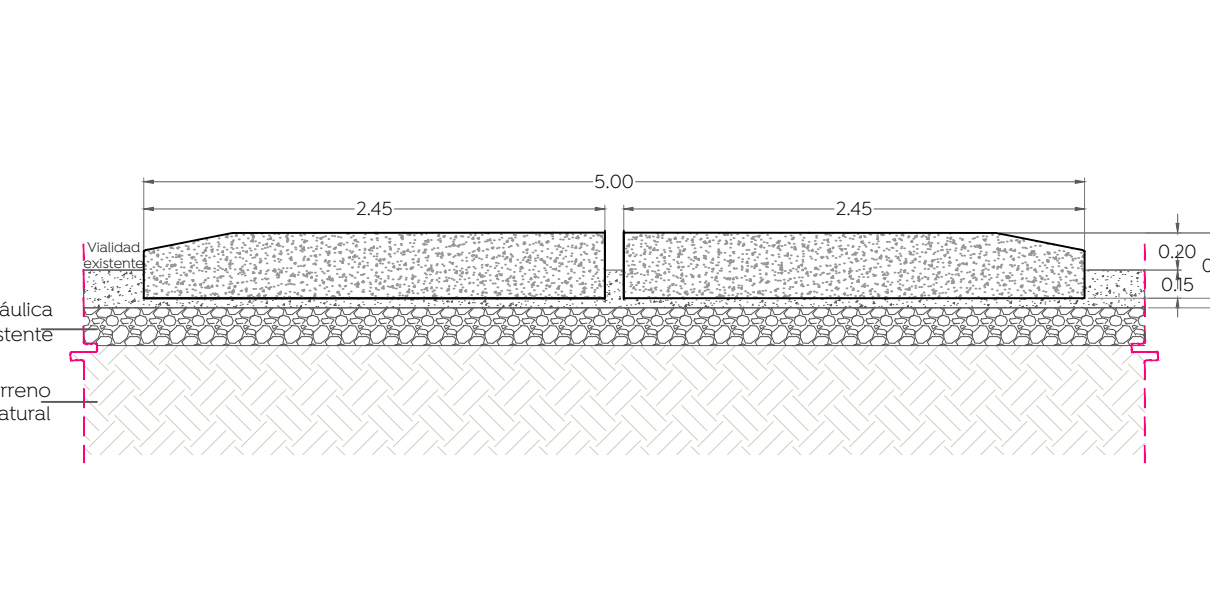
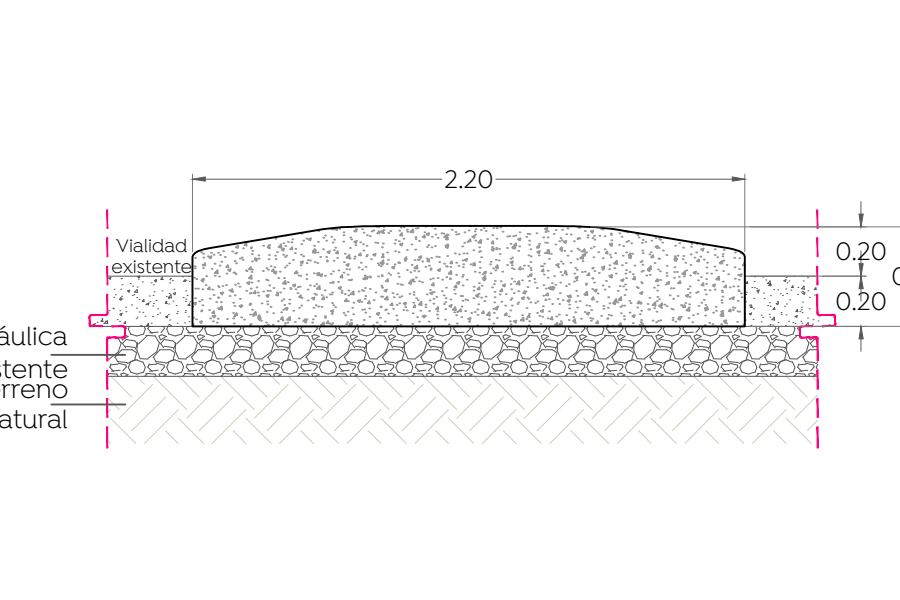
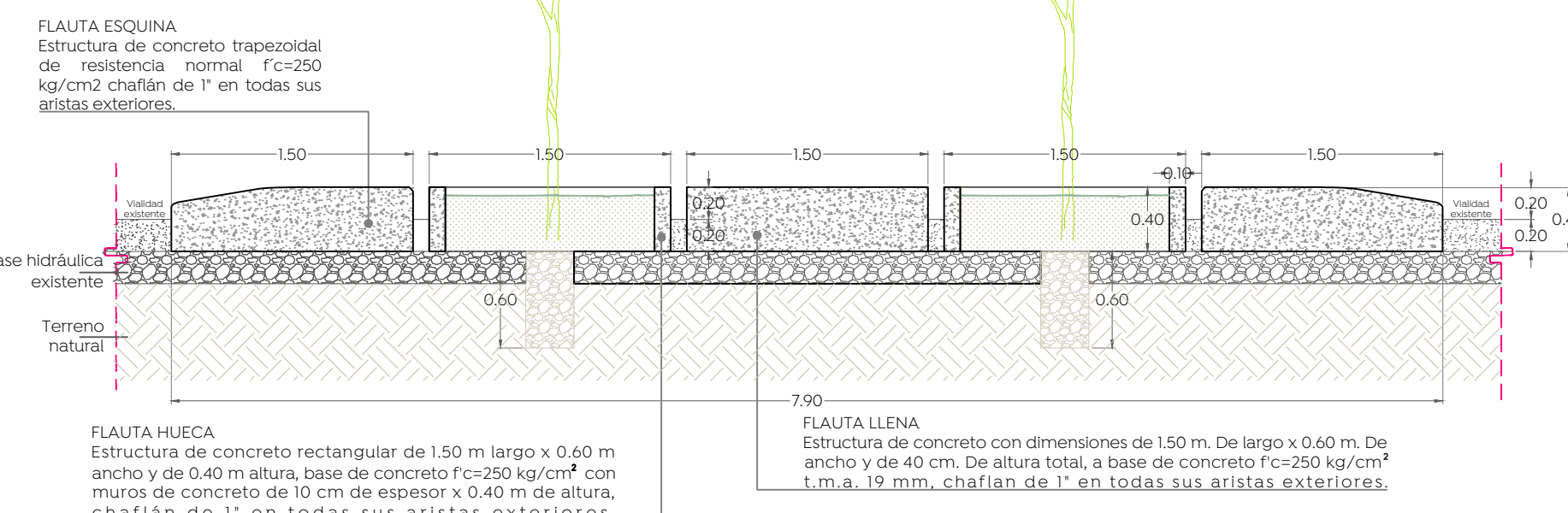


ALZADO

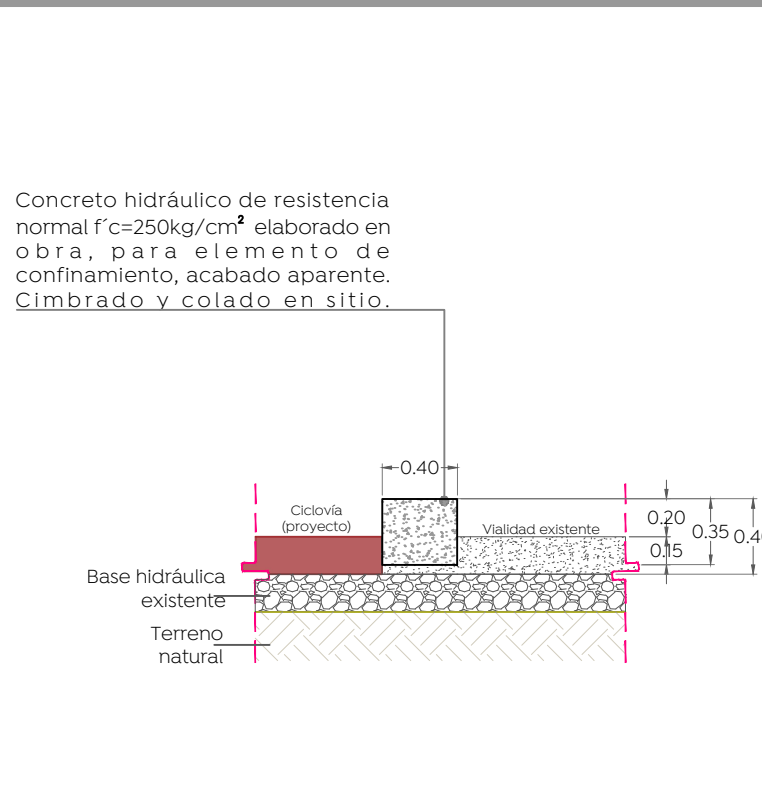
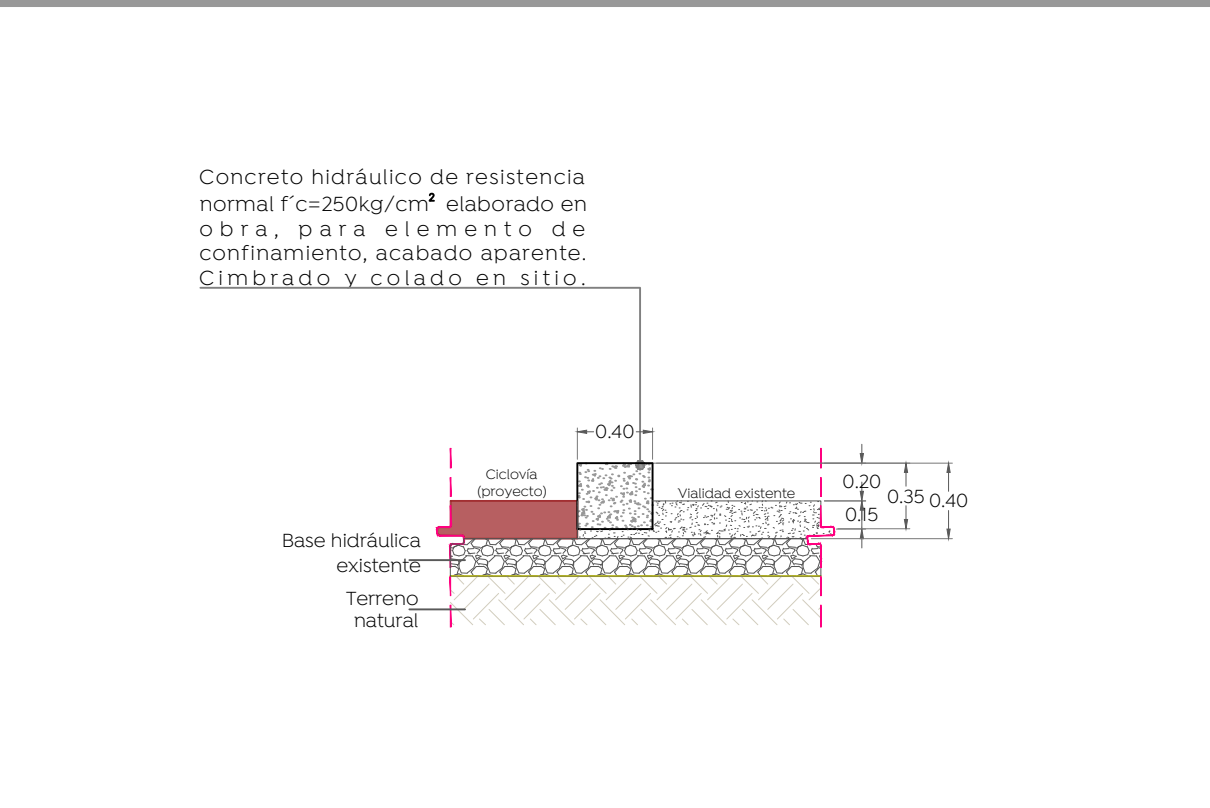
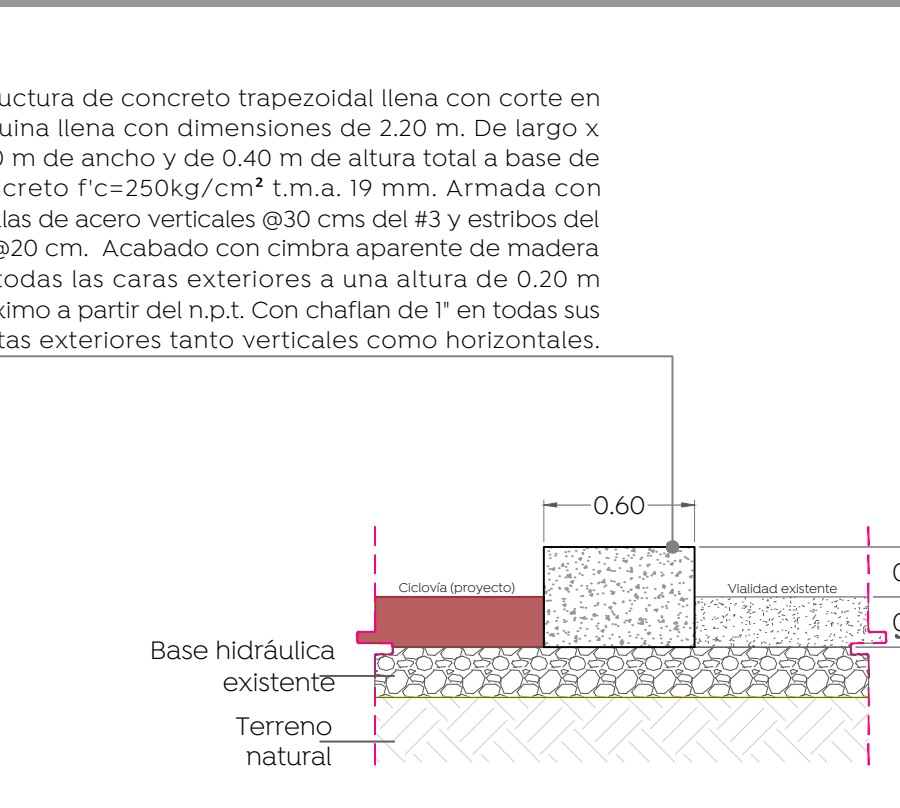
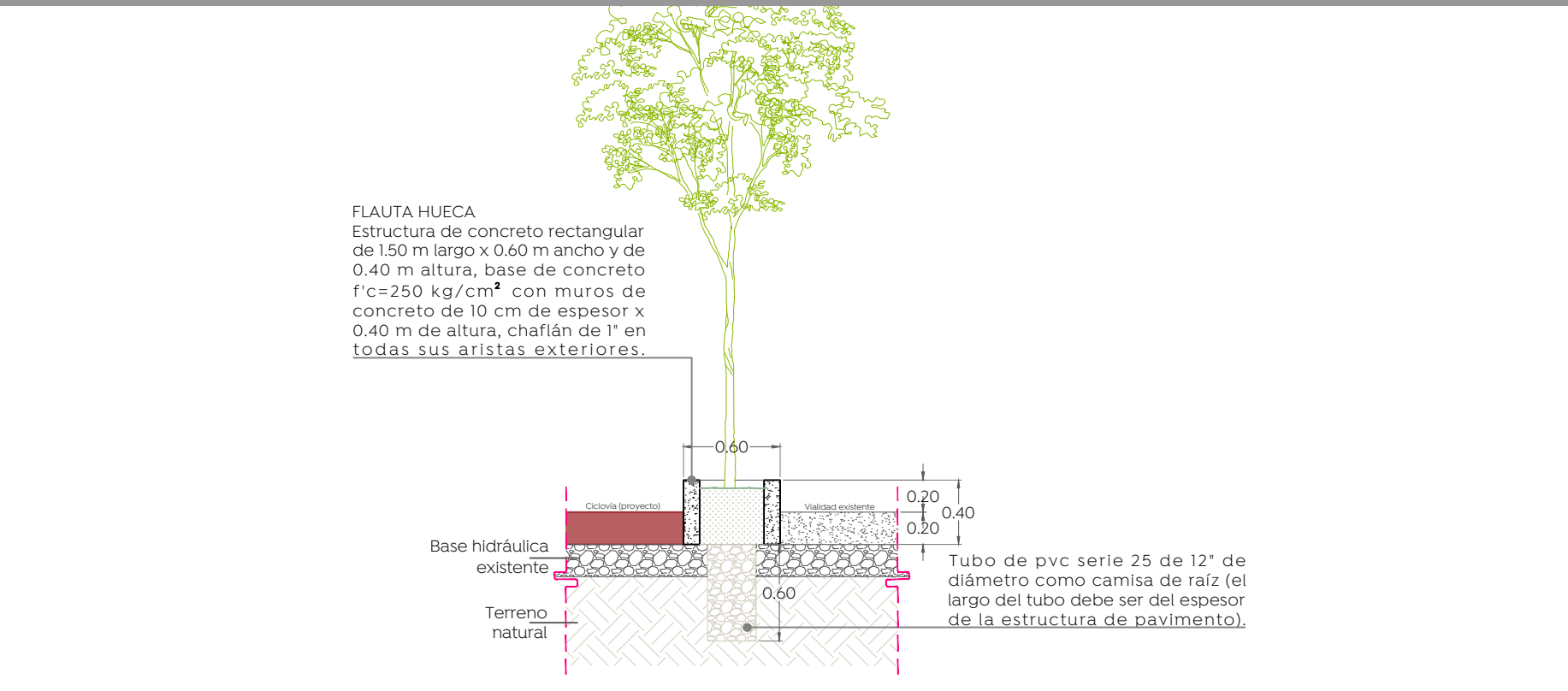


ARQUITECTÓNICO

SECCIÓN LONGITUDINAL

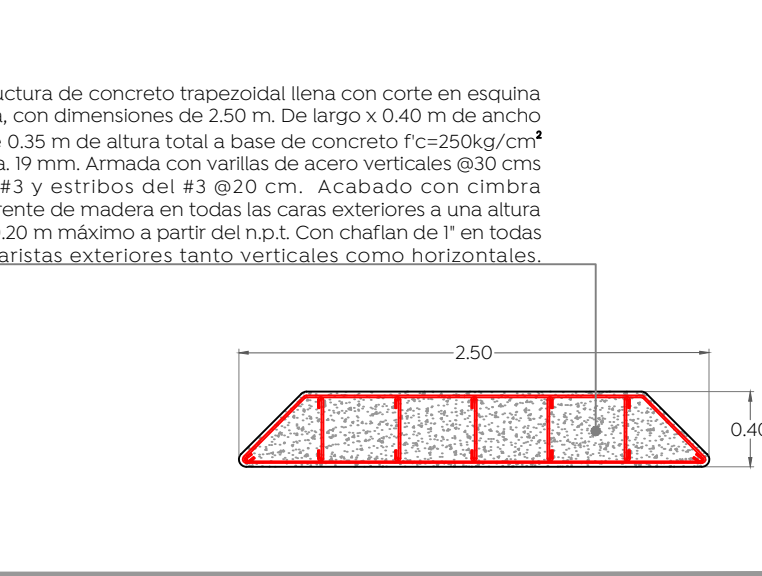
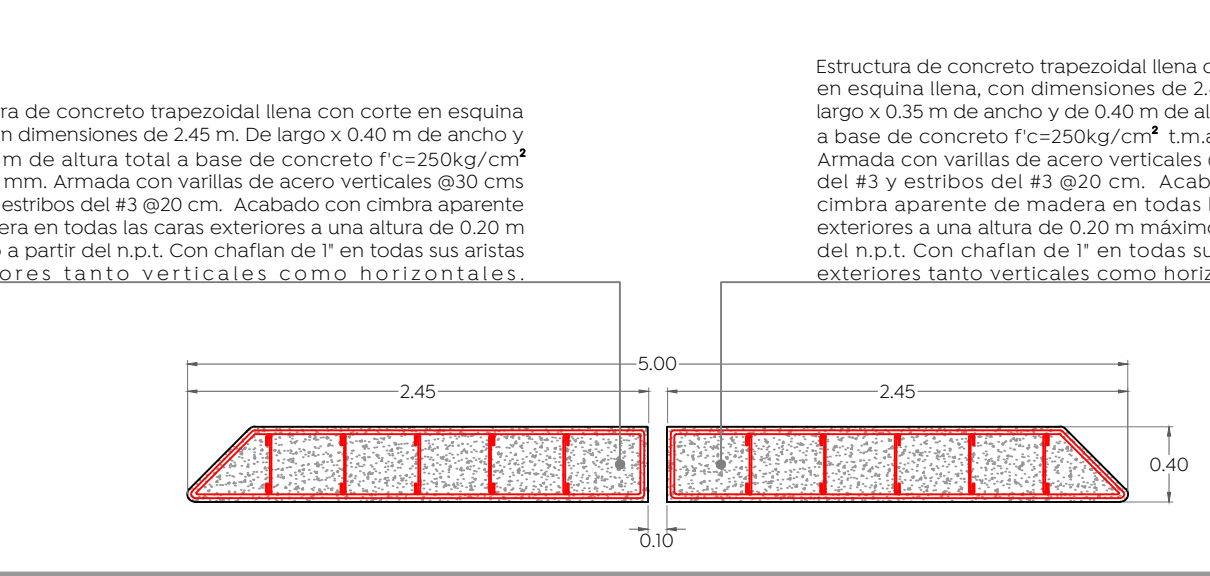
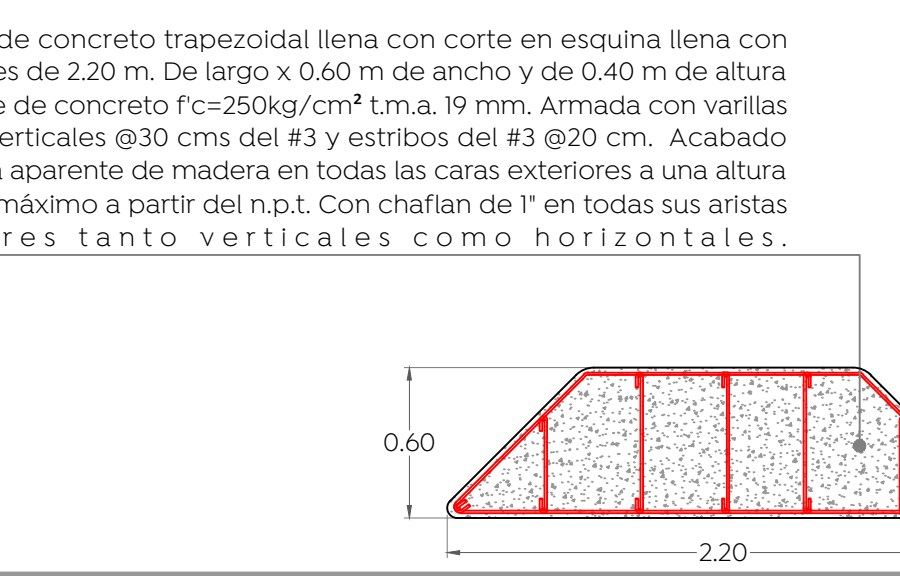
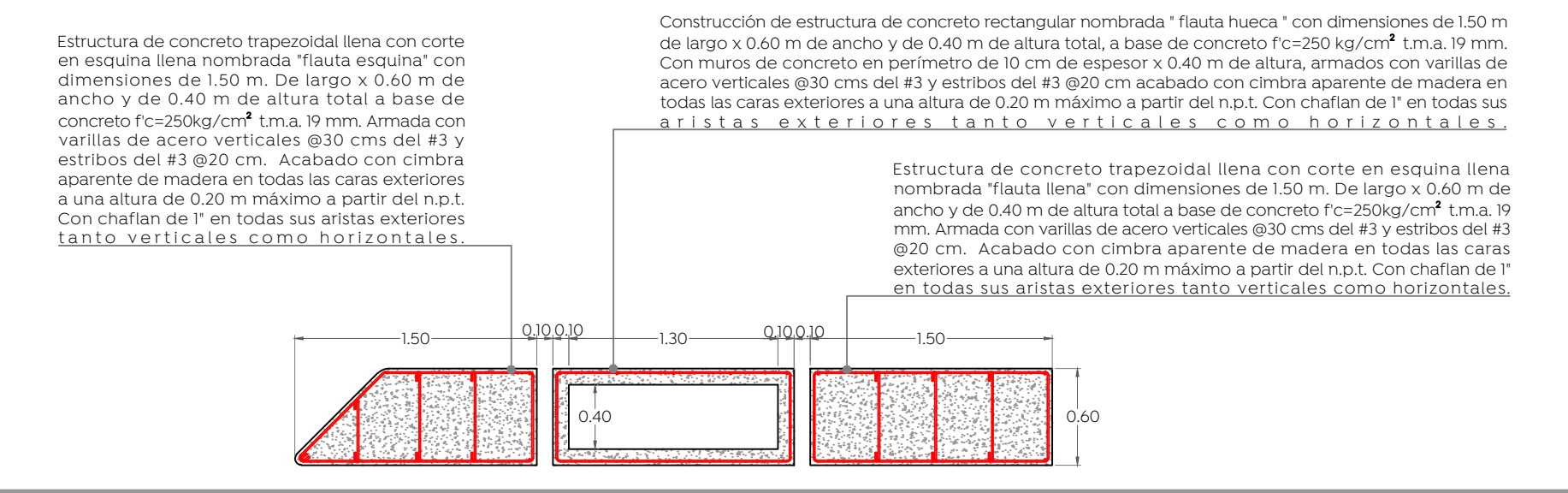


SECCIÓN TRANSVERSAL

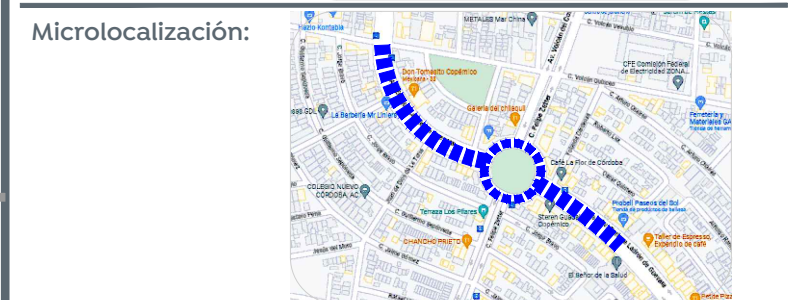
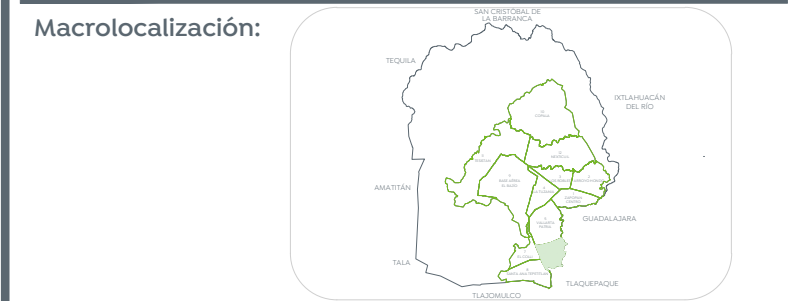
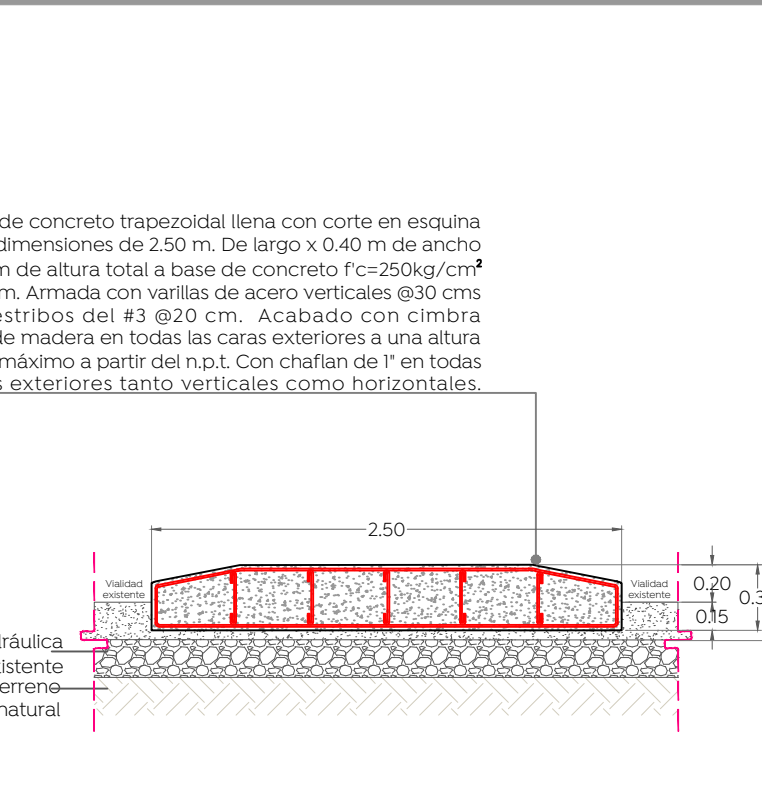
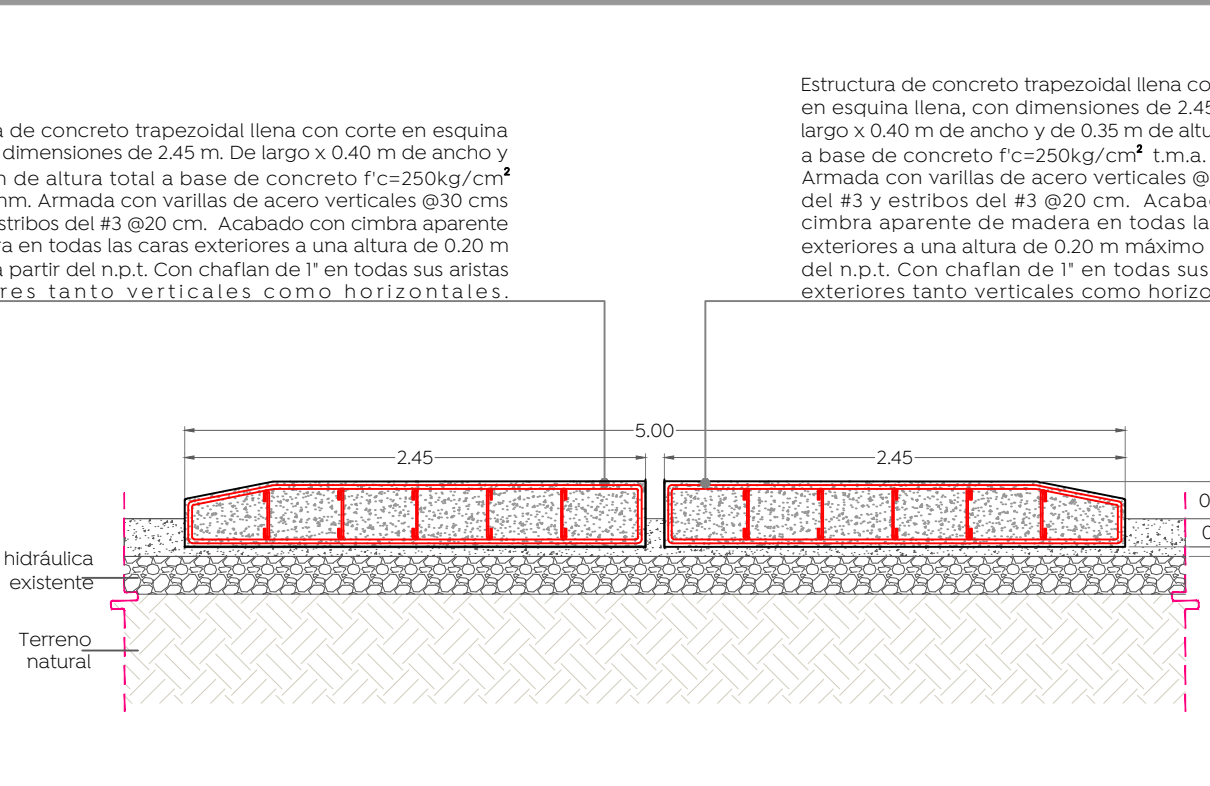
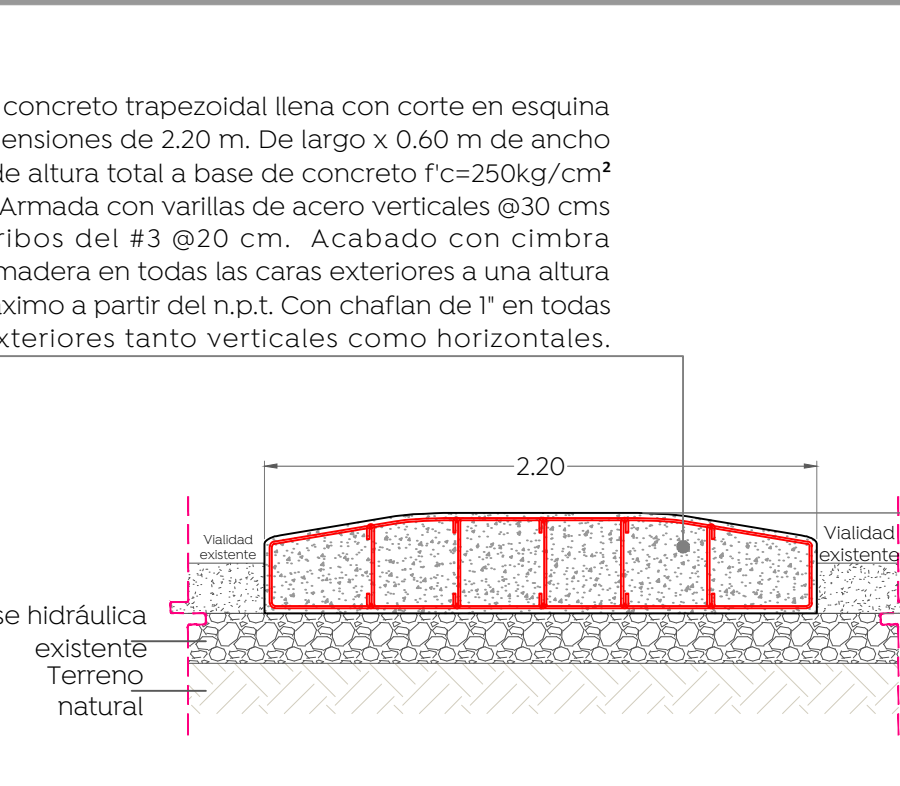
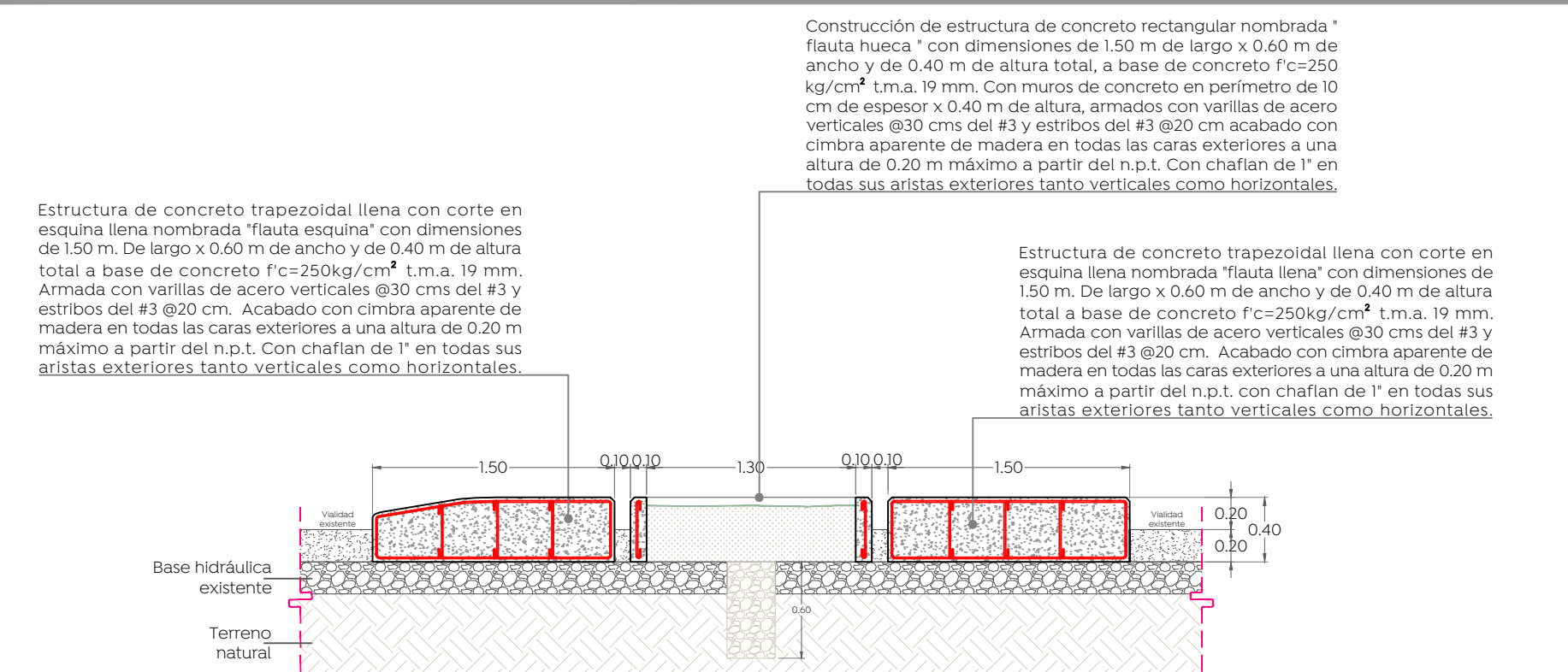


CONSTRUCTIVO

PLANTA



SECCIÓN



Alcances generales:

Nombre del proyecto:
Construcción de ciclovia, parque lineal y obras complementarias en la avenida Copérnico etapa 01, frente 01 en el municipio de Zapopan Jalisco

Contenido del plano:
Detalle de segregadores en ciclovia

No. Contrato:
DOPI-MUN-RM-PAV-LP-124-2023

Director de Obras Públicas e Infraestructura:
Ing. Ismael Jáuregui Castañeda

Jefe de la Unidad de Estudios y Proyectos:
Arq. Edwin Aguilar Escatel

Responsable del proyecto:
Arq. Luis Antonio Brena García

Ubicación:
Paseos del Sol, Zapopan, Jalisco

Fecha: Agosto 2023
 Escala: Indicada
 Acoptaciones: Metros

Clave:
DET-SEG-01